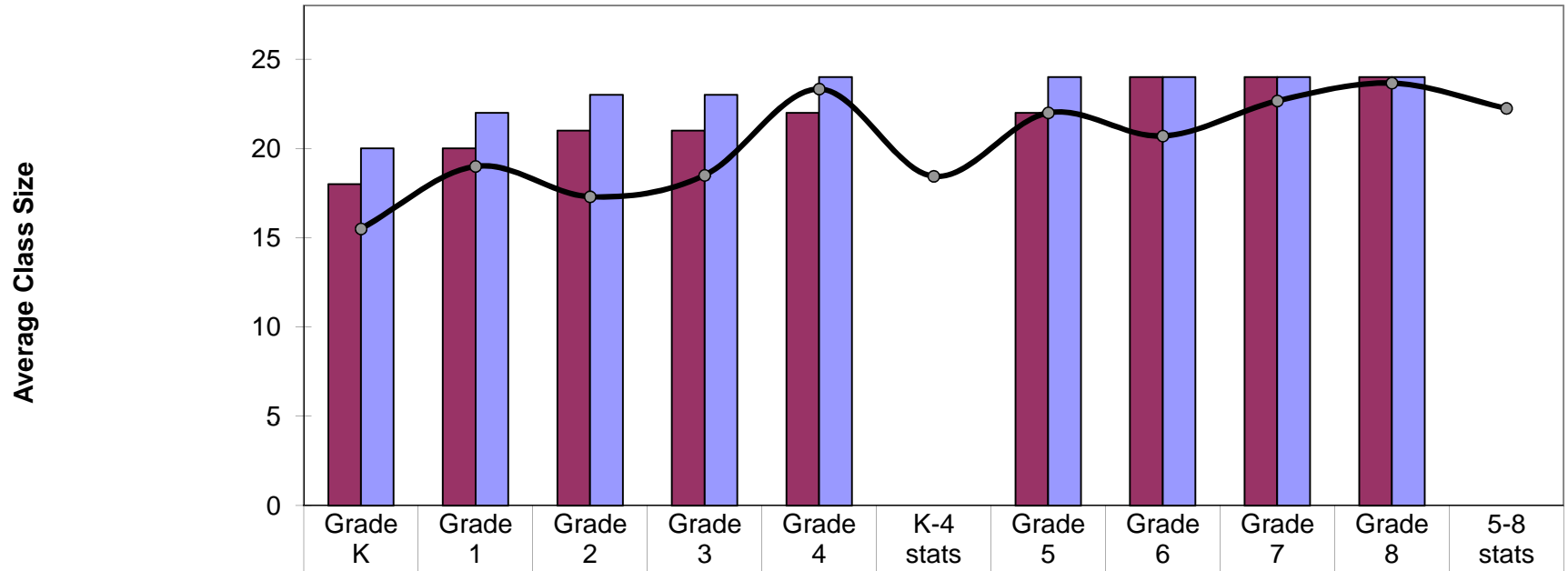
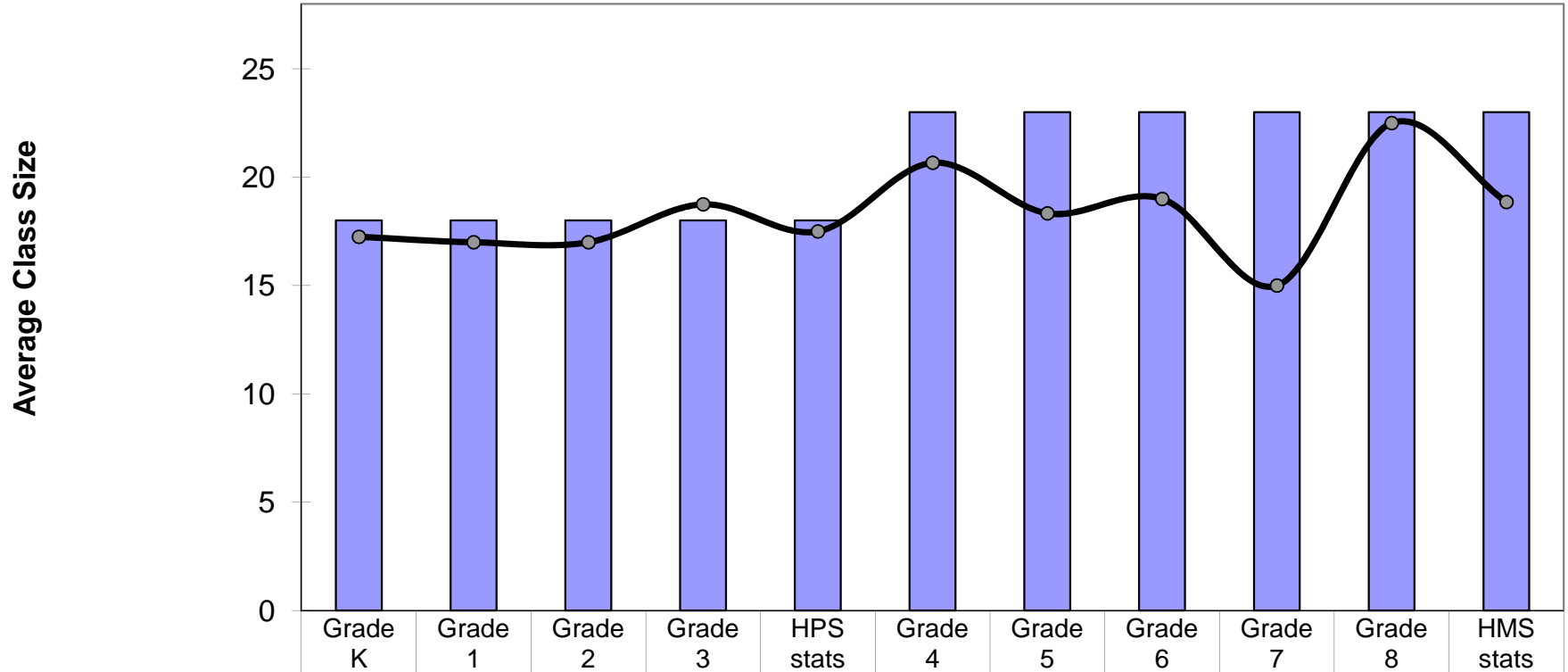


FY 2017 Projected Class Size to School Committee Policy Lincoln School



	Grade K	Grade 1	Grade 2	Grade 3	Grade 4	K-4 stats	Grade 5	Grade 6	Grade 7	Grade 8	5-8 stats
Recommended	18	20	21	21	22		22	24	24	24	
Maximum	20	22	23	23	24		24	24	24	24	
Projected Enrollment	62	57	69	74	70	332	66	62	68	71	267
Projected Avg. Class Size	15.5	19.0	17.3	18.5	23.3	18.4	22.0	20.7	22.7	23.7	22.3
Projected Sections	4	3	4	4	3	18	3	3	3	3	12
FY2016 Actual Sections	3	4	4	4	3	18	3	3	3	3	12

FY 2017 Projected Class Size to Contract Requirements Hanscom Schools



Maximum	18	18	18	18	18	23	23	23	23	23	23
Projected Enrollment	69	68	68	75	280	62	55	57	45	45	264
Projected Avg. Class Size	17.3	17.0	17.0	18.8	17.5	20.7	18.3	19.0	15.0	22.5	18.9
Projected Sections	4	4	4	4	16	3	3	3	3	2	14
FY2016 Actual Sections	4	3	4	4	15	3	3	3	3	2	14