



# LINCOLN PUBLIC SCHOOLS

BUCKNER M. CREEL  
ADMINISTRATOR FOR BUSINESS AND FINANCE

July 3, 2011

To: Lincoln School Committee  
Mickey Brandmeyer  
From: Buckner Creel

Subject: Hanscom Primary School – Proposed Playground Replacement

**Background.** The playground structures supporting the Hanscom Primary School (HPS) were built in 1990, at the time of the last renovation/expansion, but not as part of that project. The structures are made primarily from wood, and have deteriorated over time. Our maintenance staff made significant repairs to the horizontal surfaces, jacked up and resupported sections which had settled, and added additional safety rails during the summers of 2008 and 2009, but the other surfaces continue to deteriorate, producing splinters and detracting from the play. More importantly, the standards for playground design have changed over the past two decades, requiring the addition of bolt-on railings and other adjustments to increase safety. The structure does not provide the appropriate ADA access, and we have had to remove play features such as non-compliant run & jump slider rings and hand-over-hand rings on chains which did not meet the current playground codes.

**Playground assessments.** The HPS playgrounds have been the subject of several inspections during the past two years. We commissioned a safety inspection by a certified playground inspector prior to the 2009-2010 school year. The inspector noted the deteriorating condition of the structure and suggested a few modifications and repairs to bring the structure closer to code, which were made.

In January 2011, the DODEA facilities conditions inspectors made their triennial inspection, and spent some time going through and documenting the condition of the HPS playground. The most common deficiency noted on their inspection was “cracked/splintered wood.” In the outbriefing, they told us they considered the playground a strong candidate for replacement, and that they would forward their report to the Facilities section of the Domestic Dependent Elementary & Secondary Schools (DDESS) agency.

**Project Plan.** For the past several years, DDESS has conducted a playground replacement program for its schools. The projects are designed and built by an Indefinite Delivery-Indefinite Quantity (IDIQ) contract under contract to the US Army Corps of Engineers. The projects are funded through “end-of-fiscal year fallout money,” which means that the exact number of projects to be funded varies.

After receiving the DODEA report, the DDESS facilities staff put the HPS on its playground replacement program list, and wrote the attached draft scope of work. The document includes pictures of the existing playground as well as a description of the proposed work. The current IDIQ contractor installs primarily GameTime equipment, details of which can be found at <http://www.gametime.com/>. DDESS will request a proposal from the IDIQ contractor this summer, and will award a contract at the end of September 2011 if sufficient “end-of-fiscal year fallout money” falls out.

**STATEMENT OF WORK  
Playground Improvements**

**DoDEA/DDESS Hanscom AFB, Lincoln MA**

**Hanscom Elementary School**

1. Provide proposal for the Scope of Work listed below. Provide One (1) copy to the Norfolk district Contracting Officer.
2. The contractor will provide removal, disposal, installation, equipment and playground Safety Surfacing. Site layout shall be provided by the Government. Safety surfacing colors shall be coordinated with the Government prior to fabrication or manufacture. Playground equipment will be International Play Equipment Manufacturers Associations (IPEMA) certified to ASTM F1487, Standard Consumer Safety Performance Specification for Playground Equipment for Public Use.
3. The contractor shall provide a "Certified Playground Safety Inspector" (CPSI) that is certified by the National Recreation and Park Association ([www.nrpa.org](http://www.nrpa.org)) to inspect the newly installed playground and provide the Government a written audit report prior to final payment of all work.
4. The playground equipment and Safety surfacing shall be manufactured and installed accordance with the guidelines shown in the 2008 Consumer Product Safety Commission (CPSC) "Handbook for Public Playground Safety". The playground equipment must meet the ADA Accessibility Guidelines for Buildings and Facilities (ADAAG) compliant for Ages 2-5, 2-12 and/or 5-12.
5. The contractor will be responsible for the purchase, transportation and storage of all equipment and supplies.
6. Existing safety mulch that is removed shall be stock piled on the school site in a location designated by the Government for use by the school as landscaping mulch.
7. School colors and information regarding location shall be coordinated with the Government. Coordinate with government about available colors.
8. Contractor is responsible for confirming square footage measurements, and fall height and fall zone distances.

**General Site Layout**

A general site plan of the main playground area shall be provided by the Government. A sample of proposed equipment to be installed shall be provided by the Government.

### Site Improvements, Removal, and Installation

- 1. Hanscom Elementary School; Demolition:** Demolish/Remove existing playgrounds, wood chips & sand surfacing and borders for playground and swing sets shown on the Demolition Plan. Remove existing wood mulch and stock pile on site. Approximate locations of new playground and swing equipment are shown on Site Plan. Coordinate exact locations with the Lincoln School District and Hanscom AFB's Facilities Engineer.

*New Playground (60' X 78')*: Provide all materials and labor to construct a new playground for **75-100 students ages 5-12 to include**: main play structure-minimum of 3 slides (double slide counts as two), multi-level climbing structure with monkey bars (may be attached or separate) and/or bridge, tubes limited to 2' or less with the exception of tube slide. Provide and install a minimum of 6 single post swings-maximum 8' top bar and uncoated galvanized chains. Provide and install sensory play center; may include but not limited to: wall of marbles for visual and tactile experience, bongo and xylophone panel for deep auditory stimulation and shared play, 2-sided tracing panel for eye-hand coordination or comparable design. *Safety Surfacing:* Install bonded rubber mulch on 4" crushed rock base. Bonded rubber mulch thickness should meet IPEMA and CPSC requirements for an 8' critical fall height under fall zones for swing sets with a top bar height of 8', and 6' for play equipment with maximum deck height of 72" or less.

*Pre-K Playground (35' X 56')*: Provide all materials and labor to construct a new playground for **50-70 Pre-K and Kindergarten students** to include: main play structure-minimum of 2 slides, a multi-level climbing structure, and bridge. *Safety Surfacing:* Install bonded rubber mulch on 4" crushed rock base. Bonded rubber mulch thickness should meet IPEMA and CPSC requirements for an 8' critical fall height under fall zones for swing sets with a top bar height of 8', and 6' for play equipment with maximum deck height of 72" or less.

*Figure 1: Example of Sample Pre-K equipment*



Additional Links and information:

<http://www.ipema.com/default.aspx>

<http://www.astm.org/Standard/index.shtml>

<http://www.cpsc.gov/cpsc/pub/pubs/playpubs.html>

<http://www.access-board.gov/adaag/html/adaag.htm>

<http://www.nrpa.org/>

### **Period of Performance**

1. Work shall begin 5 days after award.
2. Playground Equipment shall be out of use for no longer than 45 days.
3. The contractor will provide an approved schedule within 45 days before construction
4. The contractor is required to complete this project, ready for use, within the number of calendar days specified in the contract. To ensure adequate time to correct any deficiencies noted by the Government during the final inspection, the contractor should schedule the final inspection through the Contract Administrator at least seven (7) calendar days prior to the scheduled project completion date. The contractor is solely responsible for scheduling this inspection .

### **Submittals Requirements**

1. The contractor will provide all parts, materials, and product information. Including material specifications and physical properties (ASTM test methods utilized)
2. The contractor will provide disposal/recycle certificates or manifest of all materials 14 days after project completion. (Disposal shall be in accordance with the latest Environmental Standards and local regulations)
3. The contractor will provide certificate endorsed from the manufacture stating the contractor is a certified installer for the equipment provided

**Design of Playground** – The offeror shall provide the following in its Technical Proposal:

(a) Parts List with description and quantity of parts – **the offeror must state the Brand Name/Model # and Manufacturer of its Playground Safety Surfacing.**

### **Management Approach** –

(a) The offeror shall provide an executive summary explaining its plan to accomplish the following contract requirements: delivery of playground equipment to Delalio Elementary school; removal and disposal of existing tiles and playground equipment; and, installation of new tiles and playground equipment by the required completion date.

(b) Include in this narrative, a table or activity list (**a construction schedule**) showing estimated delivery date, estimated demolition and disposal date, and installation date (contract completion date).

(c) State which subcontractor(s) will be used for this contract (if any), provide certificate of third party playground manufacture representative to inspect final inspection of installed

playground, as well as the offeror's proposed warranty terms (if any) for parts, including for aluminum and steel posts, upright posts, clamps, hardware (nuts, bolts, washers), spring assemblies, aluminum cast animals, main structure platforms and decks, metal roofs, table tops, bench tops, railings, loops, rungs, cables and plastic components. The offeror's warranty approach (e.g., in case of structural failure due to corrosion, deterioration or workmanship of equipment should be discussed in this summary.

(d) Provide format for bi-weekly status reports to be submitted to the Facility Engineer at Camp Lejeune.

### **Warranty**

The contractor will guarantee all work for a period of 12 months and repair all defects at no cost to the Government.

Minimum warranty of playground equipment:

**Fifteen (15) Year Limited Warranty** on aluminum and steel posts, upright posts against structural failure due to corrosion, deterioration or workmanship.

**Fifteen (15) Year Limited Warranty** on clamps against structural failure due to corrosion, deterioration or workmanship.

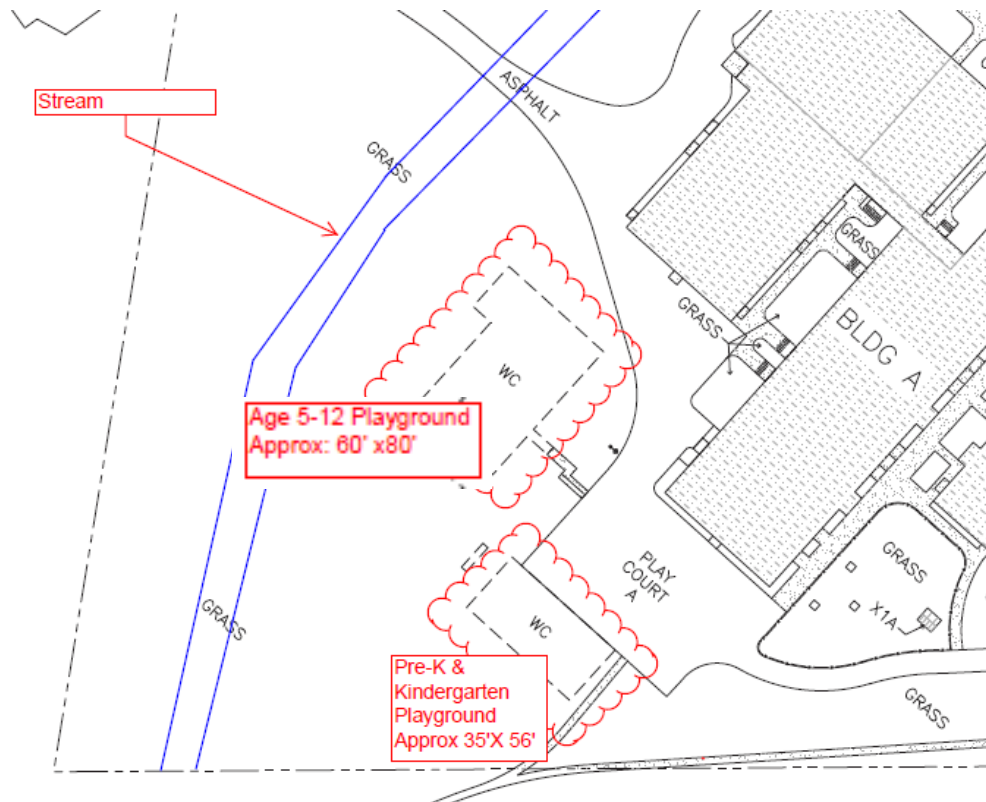
**Fifteen (15) Year Limited Warranty** on Hardware (nuts, bolts, washers) including molded aluminum parts.

**Fifteen (15) Year Limited Warranty** on spring assemblies and aluminum cast animals.

**Fifteen (15) Year Limited Warranty** on main structure platforms and decks, metal roofs, table tops, bench tops, railings, loops and rungs and cables against premature wear due to natural deterioration or manufacturing defects.

**Fifteen (15) Year Limited Warranty** on all plastic components including structural failure due to materials or workmanship.

**APPENDIX A- Site Plan** (not to scale). Contractor is responsible for verifying existing site conditions.



**APPENDIX B- Existing Site Photos**



