



LINCOLN PUBLIC SCHOOLS

MICHAEL F. BRANDMEYER
SUPERINTENDENT

October 15, 2009

To: Lincoln School Committee
From: Mickey Brandmeyer
Re: October 1 Enrollment Report

The Department of Elementary and Secondary Education requires school districts to report student enrollment each October 1st. This enrollment report becomes the official enrollment count for the district and is used to calculate several statistics, including; per pupil expenditures for that fiscal year, grant allocations for enrollment based state and federal grants, and the baseline for attendance and participation calculations for AYP and MCAS.

Reporting requirements to the Department of Elementary and Secondary Education are significant. Currently the district is required to report more than 60 unique attributes for each student including, for example, name, date and place of birth, enrollment status, special services (special education, Title I, ELL status), gender, race, ethnicity, low income status, etc.

In addition to the traditional count of students enrolled on October 1st, the School Committee has requested information regarding the number of students who have left the Lincoln School after having matriculated at some point in the kindergarten to grade 8 period. The reporting period for each school year is October 1st to September 30th.

The purpose of this request is to give awareness to the number of students leaving the Lincoln School to attend private school, participate in home schooling programs and those who simply move. The most frequent reasons for change in enrollment is leaving school to attend private school or because a family moves out of Lincoln or Boston and is no longer eligible to attend the Lincoln School. Each year the school also receives entering students who move to Lincoln during the course of the school year. There are also unique circumstances each year that are reflected in these data. These include students who leave and return, students who are retained and students with special needs who are placed in collaborative or private school programs at the initiative of the district. Students who fit into these categories are classified as other on the accompanying chart.

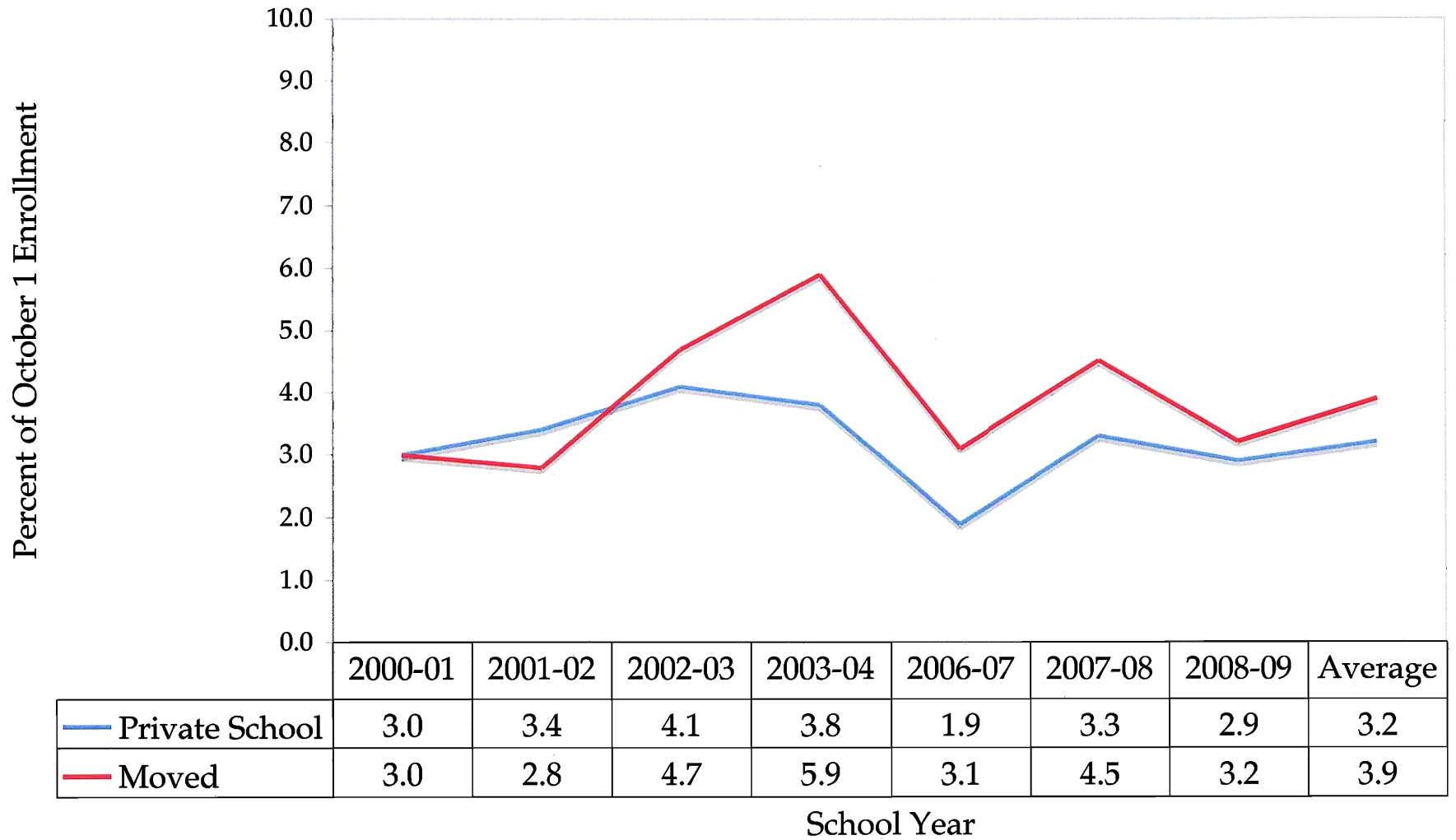
Several years ago the district changed student information tracking data systems in order to comply with DESE reporting requirements. As a result it is possible that an omission of a student who withdrew or enrolled is possible, however the current data were compiled using two data sources. The district's October 1st Enrollment Report submitted each year to the DESE and from school-site records maintained by each office. Review of these data indicate significant agreement between each data set.

The last time these data were compiled and presented was December 2004 for the school years 2000-2001 to 2003-2004. At that time the percentage of students who moved averaged 4.1%, with a range from 2.8% to 5.9% and the percentage of students who left to attend private school averaged 3.6%, with a range from 3.0% to 4.1%.

For the three-year period covering school years 2006-2007 to 2008-2009 the percentage of students who moved averaged 3.6%, with a range from 3.1% to 4.5% and the percentage of students who left to attend private school averaged 2.7%, with a range from 1.85% to 3.3%.

As has been the case in past years, students who leave to attend private schools tend to do so in grades 5 or 6, which based on prior research, is a logical change point for families wishing to enroll in private school. Seats in private school cohorts are usually available at that time and are somewhat easier to access than in later grades, especially for private schools that cover the grade range from middle through high school.

Percentage of Students who Left Lincoln School



Percent of October 1 Enrollment

School Year

**LINCOLN PUBLIC SCHOOLS
LINCOLN, MASSACHUSETTS**

OCTOBER 1, 2009 ENROLLMENT

October 1, 2009 and 2008 Enrollment by Grade Level with Comparison

SCHOOL	2009			2009 Totals	2008			2008 Totals	2009 vs 2008 Comparison
	Grade	# Sections	Students () = Boston		# Sections	Students () = Boston			
Preschool	Pre-K		14[0]	14[0]		17[1]	17[1]	Down 3	
	Outside Placements		0			0		Same	
Preschool Total								Down 3	
Lincoln School	K	4	66(8)	612(91)	3	57(6)	633(91)	Up 9	
	1	4	64(8)		3	58(7)		Up 6	
	2	3	60(7)		3	59(9)		Up 1	
	3	3	56(9)		4	69(13)		Down 13	
	4	4	68(13)		4	87(14)		Down 19	
	5	4	85(13)		3	58(8)		Up 27	
	6	3	55(9)		4	89(13)		Down 34	
	7	4	83(11)		4	76(13)		Up 7	
	8	4	72(13)		4	72(8)		Same	
Lincoln School Total	Outside Placements		3		8	Down 5			
LINCOLN CAMPUS TOTAL:				626(91)		650(91)	Down 24		
Preschool	Pre-K		41[13]	41[13]		46[12]	46[12]	Down 5	
	Outside Placements		0			0		Same	
Preschool Total								Down 5	
Hanscom Primary	K	4	55	191	3	46	227	Up 9	
	1	3	45		4	56		Down 11	
	2	3	42		4	59		Down 17	
	3	3	49		4	66		Down 17	
	Outside Placements		0			0		Same	
Hanscom Primary Total								Down 36	
Hanscom Middle	4	3	47	199	3	62	247	Down 15	
	5	3	39		3	47		Down 8	
	6	3	37		3	50		Down 13	
	7	3	38		2	40		Down 2	
	8	2	37		3	46		Down 9	
Hanscom Middle Total	Outside Placements		1		2	Down 1			
HANSCOM CAMPUS TOTAL:				431		520	Down 89		
LINCOLN PUBLIC SCHOOLS TOTAL:				1057		1170	Down 113		

[] = Out of the total number of preschool students, number of students with special needs

*The Lincoln Public Schools hosts CASE Classrooms: 3 located at the Lincoln School with 10 students and 1 located at the Hanscom Middle School with 2 students. Although disbursement of students by grade at the Lincoln School are indicated on the monthly enrollment report, those numbers are not included here.