



LINCOLN PUBLIC SCHOOLS

MICHAEL F. BRANDMEYER
SUPERINTENDENT

October 20, 2010

To: Lincoln School Committee
From: Mickey Brandmeyer
Re: October 1 Enrollment Report

The Department of Elementary and Secondary Education requires school districts to report student enrollment each October 1st. This enrollment report becomes the official enrollment count for the district and is used for several purposes: to calculate statistics such as per pupil expenditures, allocations for enrollment based state and federal grants, and the baseline for attendance and participation calculations for MCAS and AYP calculations

Reporting requirements to the Department of Elementary and Secondary Education are significant. Currently the district is required to report more than 60 unique attributes for each student including, for example, name, date and place of birth, enrollment status, special services (special education, Title I, ELL status), gender, race, ethnicity, low income status, etc.

In addition to the traditional count of students enrolled on October 1st, the School Committee has requested tracking the number of students who have left the Lincoln School after having matriculated at some point between kindergarten and grade 8. The reporting period for each school year is October 1st to September 30th.

The purpose of this request is to give awareness to the number of students leaving the Lincoln School to attend private school, participate in home schooling programs and those who move. Each year the school also receives entering students who move to Lincoln during the course of the school year. There are sometimes unique circumstances that are noted in these data. This include students who leave and return, students who are retained and students with special needs who are placed in collaborative or private school programs at the initiative of the district. Students who fit into these categories are classified as "other" on the accompanying chart.

Several years ago the district changed data tracking and reporting software systems in order to comply with DESE requirements. As a result it is possible that the omission of a student who withdrew or enrolled is possible, however the data were compiled using two data sources. The district's October 1st Enrollment Report submitted each year to the DESE and from school-site records maintained by each office. Review of these data indicates significant agreement.

In past years, students who were enrolling in private school tended to leave the district at either 5th or 6th grade or after completing 8th grade. This trend seems to have shifted as more Lincoln resident students transitioned to private school after grade 7, while Boston resident students left after grade 6. The most significant number of student left the public school for private school after grade 8 (14 of 71).

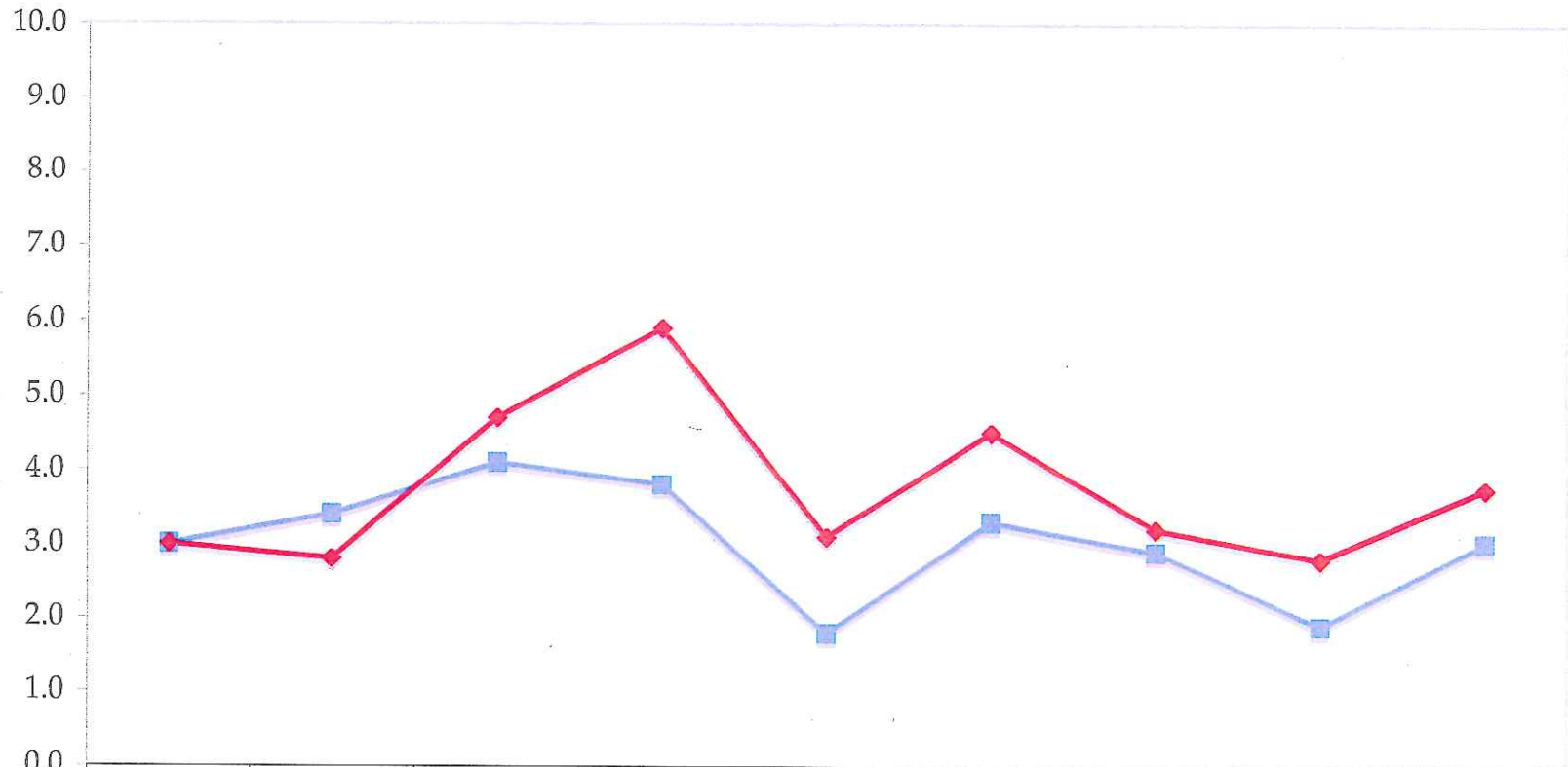
October 1, 2006 to September 30, 2007											
October 1 Enrollment 654											
	K	1	2	3	4	5	6	7	Total	% of Total	
Lincoln Resident											
Private School	0	1	1	1	2	2	5	0	12	1.83%	
Moved	5	2	0	1	0	1	1	2	12	1.83%	
Home School	0	1	0	0	0	0	0	0	1	0.15%	
Other	0	0	0	0	0	0	0	1	1	0.15%	
Entered	9	5	4	5	3	8	4	6	44	6.73%	
METCO Students											
	K	1	2	3	4	5	6	7	Total	% of Total	
Private School	0	0	0	0	0	0	0	0	0	0.00%	
Moved	5	1	0	0	1	0	0	1	8	1.22%	
Home School	0	0	0	0	0	0	0	0	0	0.00%	
Other	0	0	0	0	0	0	0	0	0	0.00%	
Entered	3	1	3	0	0	0	0	0	7	1.08%	

October 1, 2007 to September 30, 2008											
October 1 Enrollment 661											
	K	1	2	3	4	5	6	7	Total	% of Total	
Lincoln Resident											
Private School	2	0	3	3	4	7	2	0	21	3.18%	
Moved	4	4	1	1	3	3	3	2	21	3.18%	
Home School	0	0	0	0	1	0	0	0	1	0.15%	
Other	2	1	0	0	0	2	1	0	6	0.91%	
Entered	9	7	5	5	2	4	4	3	39	5.93%	
METCO Students											
	K	1	2	3	4	5	6	7	Total	% of Total	
Private School	0	0	0	0	0	0	1	0	1	0.15%	
Moved	2	0	1	0	1	3	1	1	9	1.36%	
Home School	0	0	0	0	0	0	0	0	0	0.00%	
Other	0	0	0	0	0	0	0	0	0	0.00%	
Entered	0	0	0	0	0	1	0	0	1	0.15%	

October 1, 2008 to September 30, 2009											
October 1 Enrollment 608											
	K	1	2	3	4	5	6	7	Total	% of Total	
Lincoln Resident											
Private School	0	1	1	4	4	3	2	2	17	2.69%	
Moved	1	3	1	2	2	2	3	3	17	2.69%	
Home School	0	0	1	0	0	1	0	0	2	0.32%	
Other	1	0	0	0	0	1	0	0	2	0.32%	
Entered	7	6	0	5	5	5	1	1	30	4.80%	
METCO Students											
	K	1	2	3	4	5	6	7	Total	% of Total	
Private School	0	0	0	0	0	1	0	0	1	0.16%	
Moved	0	0	0	0	1	0	2	0	3	0.47%	
Home School	0	0	0	0	0	0	0	0	0	0.00%	
Other	0	0	0	0	0	0	0	0	0	0.00%	
Entered	0	0	0	0	0	0	0	0	0	0.00%	

October 1, 2009 to September 30, 2010											
October 1 Enrollment 608											
	K	1	2	3	4	5	6	7	Total	% of Total	
Lincoln Resident											
Private School	0	0	1	0	1	2	0	4	8	1.26%	
Moved	5	3	1	0	2	0	0	1	12	1.90%	
Home School	0	0	0	0	0	0	0	0	0	0.00%	
Other	0	0	0	0	0	0	0	0	0	0.00%	
Entered	6	5	7	4	2	3	9	4	40	6.40%	
METCO Students											
	K	1	2	3	4	5	6	7	Total	% of Total	
Private School	0	0	0	0	0	0	4	0	4	0.63%	
Moved	1	0	1	1	0	1	0	1	5	0.79%	
Home School	0	0	0	0	0	0	0	0	0	0.00%	
Other	0	0	0	0	0	0	0	0	0	0.00%	
Entered	0	0	0	0	0	0	0	0	0	0.00%	

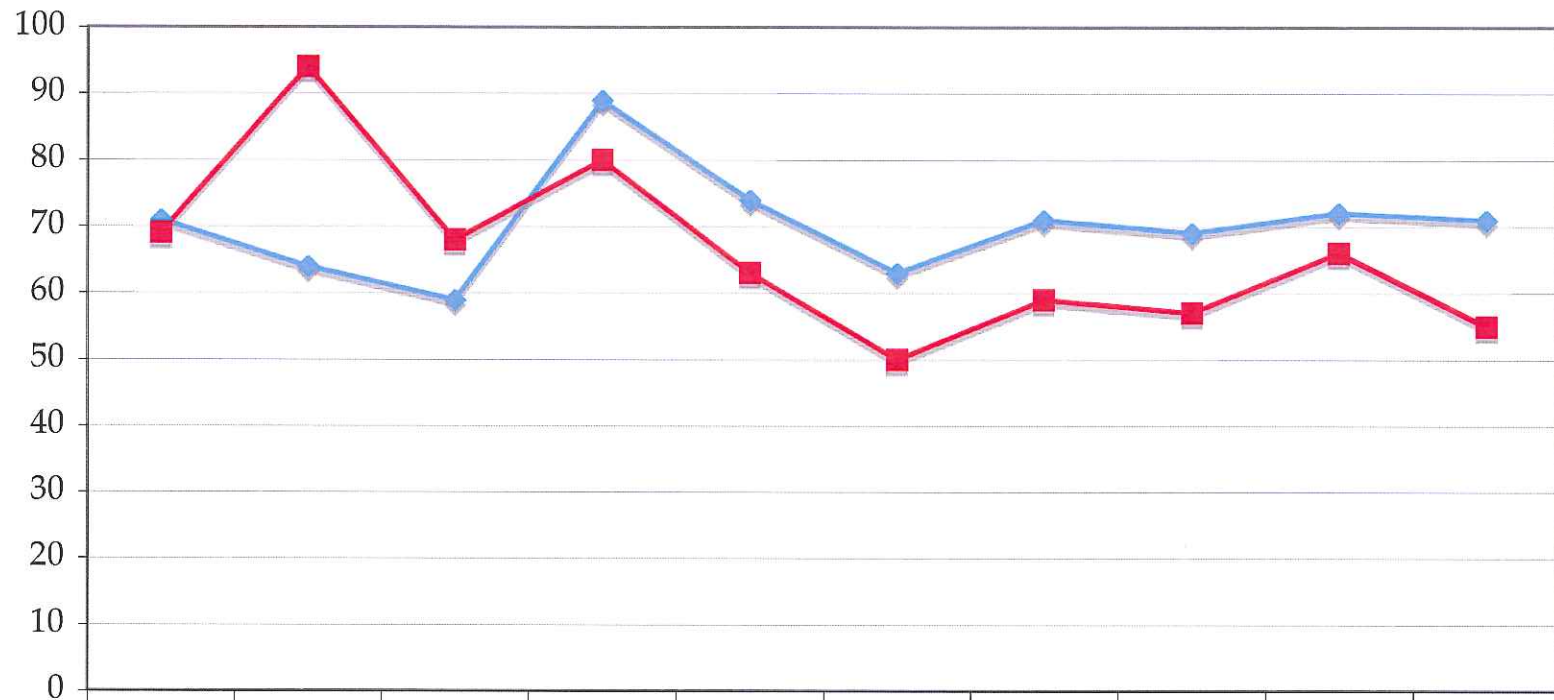
Percentage of Students who Left Lincoln School



	2000-01	2001-02	2002-03	2003-04	2006-07	2007-08	2008-09	2009-10	Avg.
Prvt Sch	3.0	3.4	4.1	3.8	1.8	3.3	2.9	1.9	3.0
Moved	3.0	2.8	4.7	5.9	3.1	4.5	3.2	2.8	3.8

School Year

Change between graduating grade 8 and enrolling K



	2000-01	2001-02	2002-03	2003-04	2004-05	2005-06	2006-07	2007-08	2008-09	2009-10
Gr. 8	71	64	59	89	74	63	71	69	72	71
New K	69	94	68	80	63	50	59	57	66	55

Gr. 8 New K

**LINCOLN PUBLIC SCHOOLS
LINCOLN, MASSACHUSETTS**

OCTOBER 1, 2010 ENROLLMENT

October 1, 2010 and 2009 Enrollment by Grade Level with Comparison

SCHOOL	<u>2010</u>			<u>2010 Totals</u>	<u>2009</u>		<u>2009 Totals</u>	2010 vs 2009 Comparison
	<u>Grade</u>	<u># Sections</u>	<u>Students () = Boston</u>		<u># Sections</u>	<u>Students () = Boston</u>		
Preschool	Pre-K		20[2]			14[0]		Up 6
	Outside Placements		0			0		Same
Preschool Total				20[2]			14[0]	Up 6
Lincoln School	K	3	55(6)	4	66(8)			Down 11
	1	4	66(8)	4	63(8)			Up 3
	2	4	65(9)	3	60(7)			Up 5
	3	3	64(6)	3	56(9)			Up 8
	4	3	59(9))	4	68(13))			Down 9
	5	3	67(13)	4	85(13)			Down 18
	6	4	85(12)	3	55(9)			Up 30
	7	3	60(11)	4	83(11)			Down 23
	8	4	81(10)	4	72(13)			Up 9
	Outside Placements		3		3			Same
Lincoln School Total				605(84)			611(91)	Down 6
LINCOLN CAMPUS TOTAL:				625(84)			625(91)	Same
Preschool	Pre-K		81[12]			41[13]		Up 40
	Outside Placements		0			0		Same
Preschool Total				81[12]			41[13]	Up 40
Hanscom Primary	K	3	47	4	55			Down 8
	1	3	48	3	45			Up 3
	2	3	47	3	42			Up 5
	3	3	48	3	49			Down 1
	Outside Placements		3		0			Up 3
Hanscom Primary Total				193			191	Up 2
Hanscom Middle	4	3	40	3	47			Down 7
	5	3	47	3	39			Up 8
	6	2	24	3	37			Down 13
	7	2	34	3	38			Down 4
	8	2	39	2	37			Up 2
	Outside Placements		0		1			Down 1
Hanscom Middle Total				184			199	Down 15
HANSCOM CAMPUS TOTAL:				458			431	Up 27
LINCOLN PUBLIC SCHOOLS TOTAL:				1083			1056	Up 27

[] = Out of the total number of preschool students, number of students with special needs