

Lincoln Public Schools COVID-19 Response Update

Presented to School Committee 2/10/2022



Recap of Recent Activities

- Launched weekly at-home testing and ended test and stay
- Replaced close contact tracing with potential exposure notifications at the classroom (PK-5) or grade level (6-8)
- Updated protocols to align with changes and recommend rapid tests before returning from quarantine or isolation
- Expanded access to rapid antigen tests for students for testing prior to return, in the case of household exposure, or when there are barriers to access
- Extended town rapid test program to our Boston resident families

Dashboard Snapshot - Thu 2/10

Total confirmed COVID-19 cases

359

Confirmed cases among students

290

Confirmed cases among faculty/staff

69

Cases found through testing program

143

Cases By Month

- *September:* 9
- *October:* 9
- *November:* 34
- *December:* 69
- *January:* 218
- *February:* 20

Total Cases By Campus

- *Hanscom Campus:* 184
- *Lincoln Campus:* 175

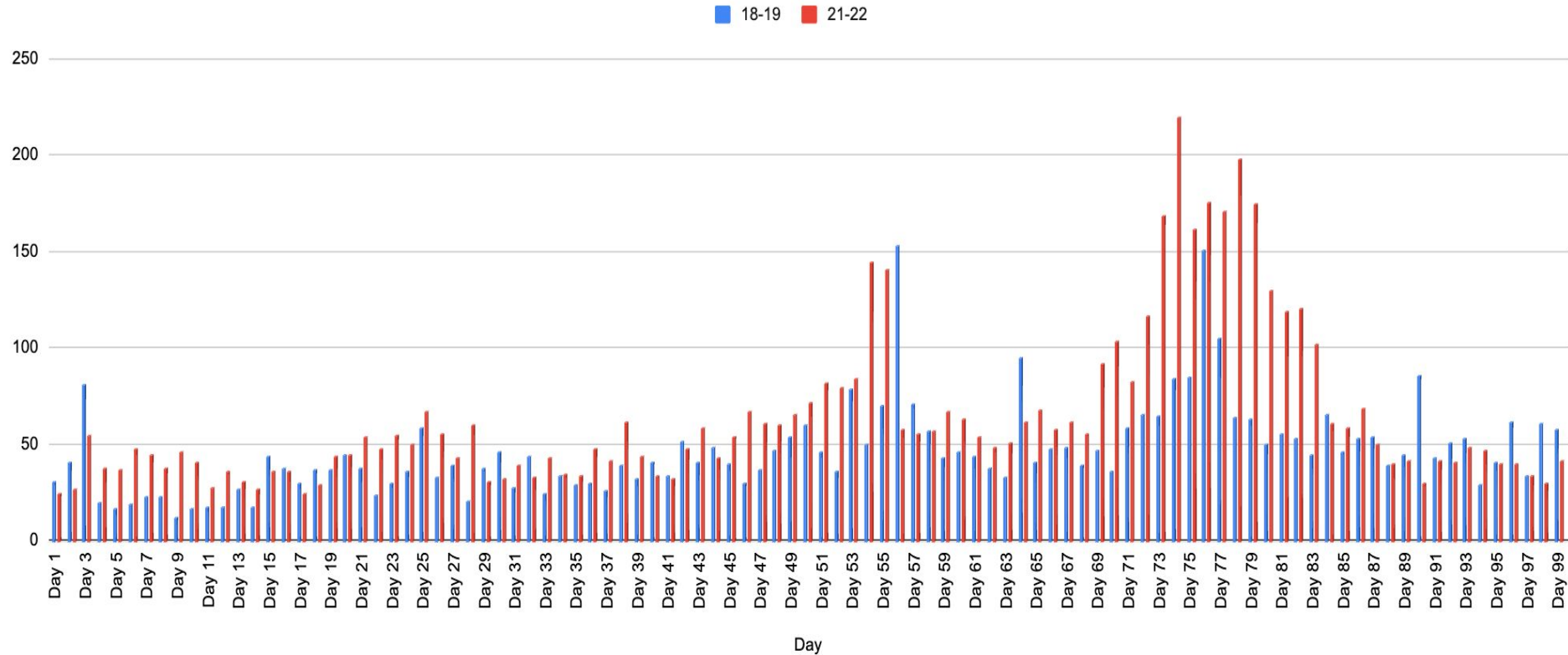
<https://www.lincnet.org/coviddashboard>

COVID Trends - January and February

| | Weekly DESE Case Report (Thu-Wed) | Positive Pools (PCR) | Positive Weekly At-Home Tests | Student Avg Daily Absences | Staff Avg Daily Absences | Lincoln 14-day % Positivity | MWRA Wastewater Surveillance Northern 7 day avg |
|--------------|--|-----------------------------|--------------------------------------|-----------------------------------|---------------------------------|------------------------------------|--|
| Week of 1/3 | 130 | 32 | - | 196 | 47 | - | 8,353 |
| Week of 1/10 | 64 | 21 | - | 172 | 42 | 9.88% | 5,091 |
| Week of 1/17 | 41 | 18 | - | 84 | 38 | 10.28% | 2,331 |
| Week of 1/24 | 29 | 6 | - | 55 | 32 | 8.69% | 1,420 |
| Week of 1/31 | 22 | 5 | 0 | 61 | 33 | 4.35% | 1,016 |
| Week of 2/7 | 13 | 1 | 2 | 44 | 27 | 2.09% | 572 (2/5) |

Student absences 18-19 (Pre-COVID) vs 21-22

of Students Absent by Day



Student Vaccination Rates (Fully vaccinated)

| Hanscom | |
|----------------------|-----|
| Preschool at Hanscom | 1% |
| HPS (K-3) | 19% |
| HMS (4-8) | 33% |

| Lincoln | |
|----------------------|-----|
| Preschool at Lincoln | 18% |
| Lincoln School K-4 | 61% |
| Lincoln School 5-8 | 75% |

Details and caveats:

- Vaccination data from Massachusetts Immunization Information System (MIIS) or directly reported by parents to the school.
- Follow-up and outreach is necessary. These are likely undercounts.
- Hanscom data may in part reflect student mobility and HAFB not reporting directly to MIIS database.
- Most preschool students are still not eligible to be vaccinated. Only 18% of Lincoln and 34% of Hanscom preschool students are eligible to be vaccinated.

MA Masking Order Ending

- Order ends as of 2/28 and decisions revert back to local control
- Local decision to continue masking requirements or shift to less masking
- Areas where masking will still be required/necessary in all districts:
 - School buses (Federal)
 - Nurse's offices (per MA DPH, healthcare settings)
 - Individuals in days 6-10 following a positive test result
 - Individuals with specific health concerns
- DESE/DPH strongly recommends unvaccinated individuals continue to mask, regardless of local decision
- Individuals must have personal discretion to wear masks without stigma

Lincoln Decisions

- Continue with local mask wearing requirement for staff and students, or shift to less masking?
- If the decision is to shift to less masking, when would this take effect?
- Are there school, district, or community metrics that would have to be met before shifting to less masking, or conversely, when masking would return?
- What accommodations do we need to make for students and staff with special health considerations (immunocompromised, etc.)?
- Does this look different for Preschool?

Initial Recommendation

- End universal masking requirement on Monday March 7th
 - Provides one week buffer after February break
- From March 7th, masking only required on school buses, in nurse's office, when in days 6-10 after testing positive, and at the nurse's direction (such as when an individual develops symptoms in school)
- Individuals are welcome to continue to wear masks at their personal discretion. LPS will continue to provide KN95 or N95 masks to staff upon request.
- The health and administrative teams will monitor case rates at the classroom, grade, school, and district level, and may put in place temporary masking requirements as needed to respond to instances of in-school spread.
- Other mitigations including increased ventilation and the testing program will stay in place and be reviewed by the COVID problem solving team as appropriate.