

LPS Education 2021 Task Force

School Committee Meeting
May 28, 2020

Planning for 2020 - 2021

1.

Priorities

What are our areas of focus?

2.

Assumptions and Uncertainties

What are our working assumptions and what questions remain unanswered?

3.

Task Force Structure

How will we ensure we have the right voices at the table?

4.

Decision-Making

How will decisions be made and who has final authority?

5.

Task Force Charge

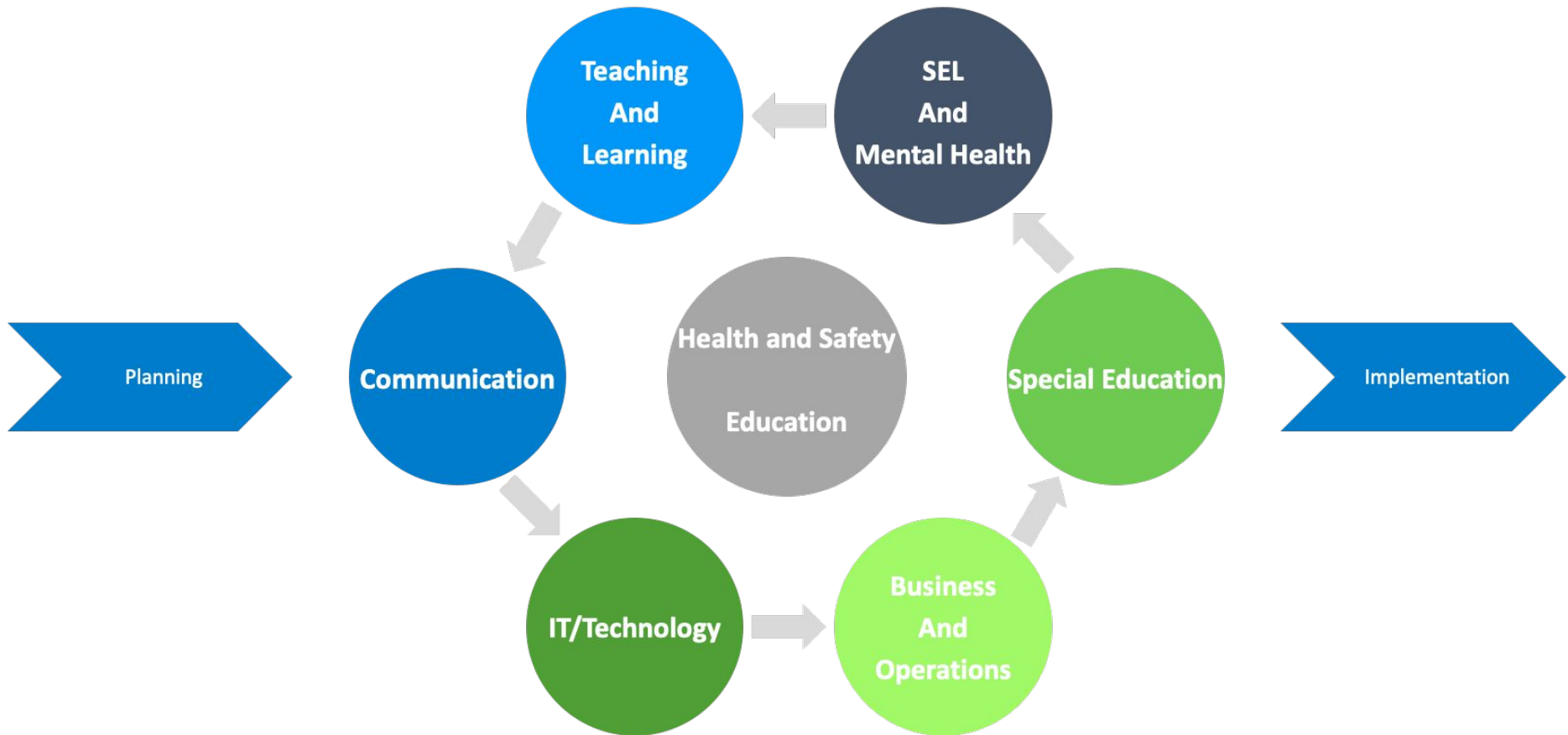
What is the role of the Task Force?

6.

Timeline and Next Steps

How will the process be carried out and when will the plan be finalized?

Planning Priorities



Assumptions and Uncertainties

Assumptions:

- COVID-19 will impact school based education for 2020 - 2021 and beyond
- DESE and Public Health will provide directives and guidance
- Health and Safety must be the Primary Priority
- For economic reasons, we may be required to open to support the work force
- We must create flexible and adaptable systems to meet multiple scenarios and student needs
- There will be blended models of in-person and remote learning, possibly during the same periods of time
- Our plans will change to meet needs as they evolve

Uncertainties:

- The trajectory of COVID-19 infection and development of a vaccine
- How will the Governor's Four Phases of Re-opening align with school timelines
- Specificity of directives from DESE
- Health and Safety Requirements - PPE, Cleaning...
- Impact on students and families
- Financial implications
- Staffing implications

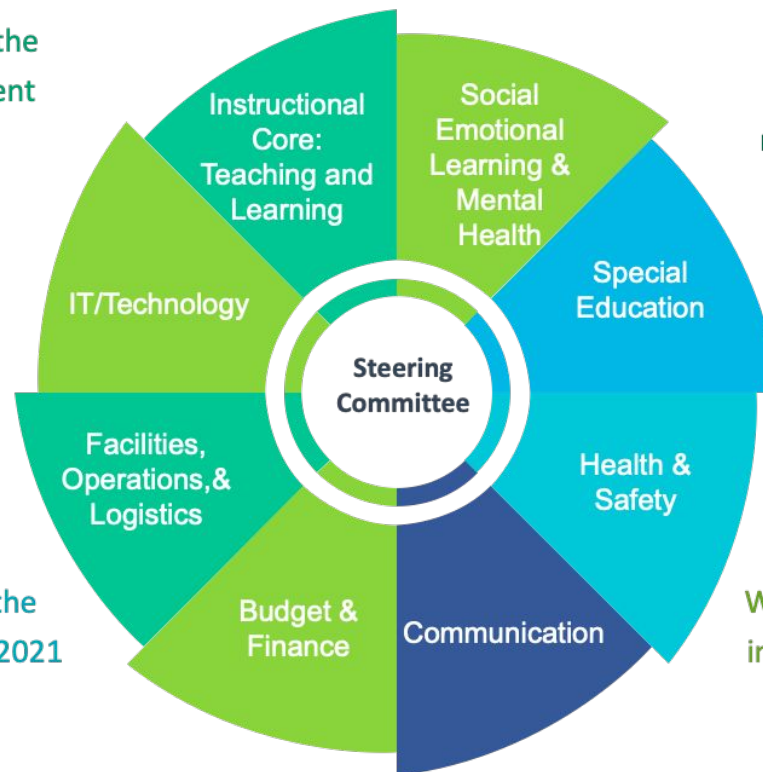
LPS Education 2021 Task Force

Steering Committee and Working Groups:

The Steering Committee serves as the advisory group to the Superintendent and School Committee

The Steering Committee Reviews and Vets all Working Group proposals

The Steering Committee creates the District Education Plan for 2020 -2021

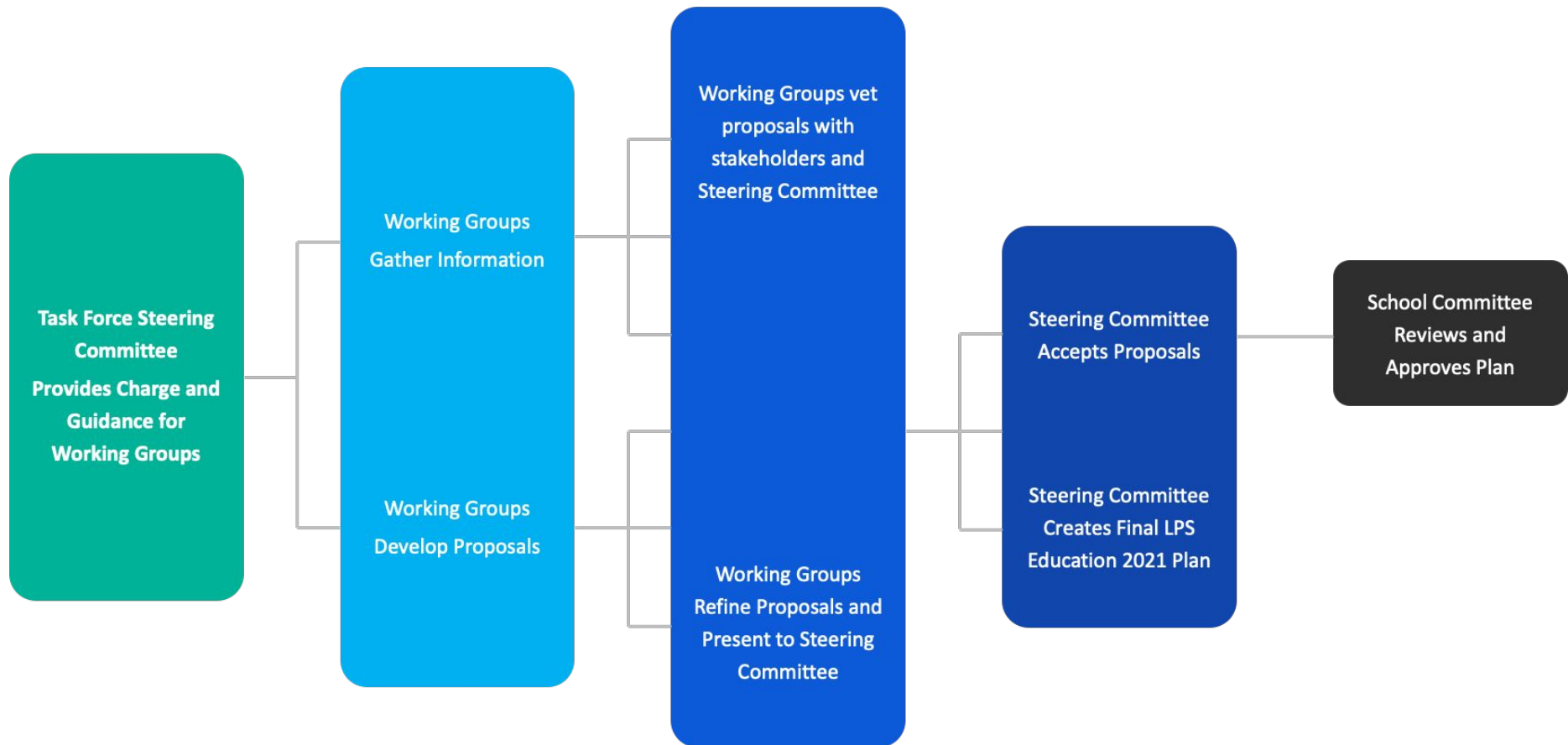


Each Working Group is led by a District Administrator who is a member of the Steering Committee.

Working Groups are made up of knowledgeable stakeholders

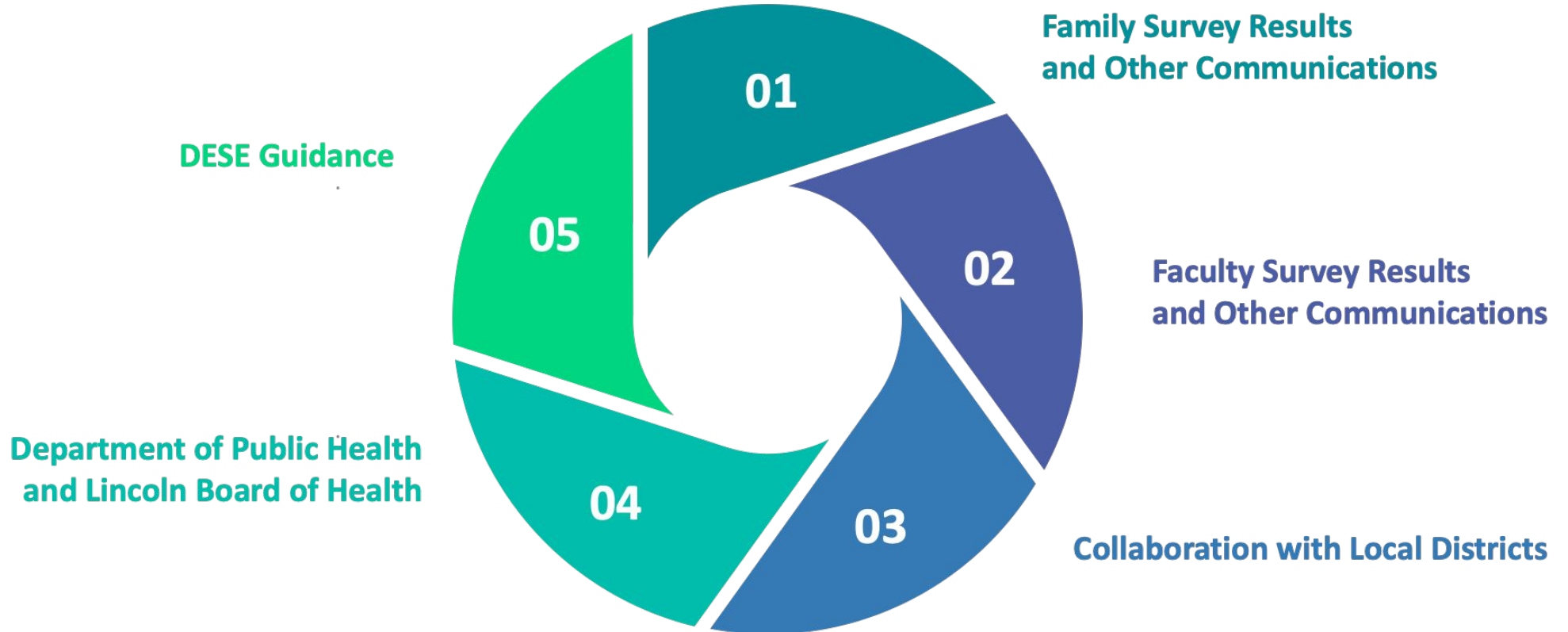
Working Groups develop proposals for implementation for their area of focus

Decision-Making Process



Data Sources

Informing our Decisions



Steering Committee

Facilitated by Superintendent, Becky McFall

◆ Working Group Facilitators

◆ METCO Staff

◆ Lincoln Principal

◆ Student Services Coordinator



◆ School Committee/Parent

◆ HAFB Liaison

◆ Invited Town Representatives

◆ Parent/Health Care Provider

Communication/Equity

The Steering Committee and All Working Groups will maintain an equity lens and will develop communication plans

Working Groups

Led by Members of Steering Committee

◆ Teaching & Learning – Jess Rose

Administrators, Content
Specialists, Faculty, Invited Guests

◆ SEL & Mental Health – Julie Vincentsen, Co-leader To Be Confirmed

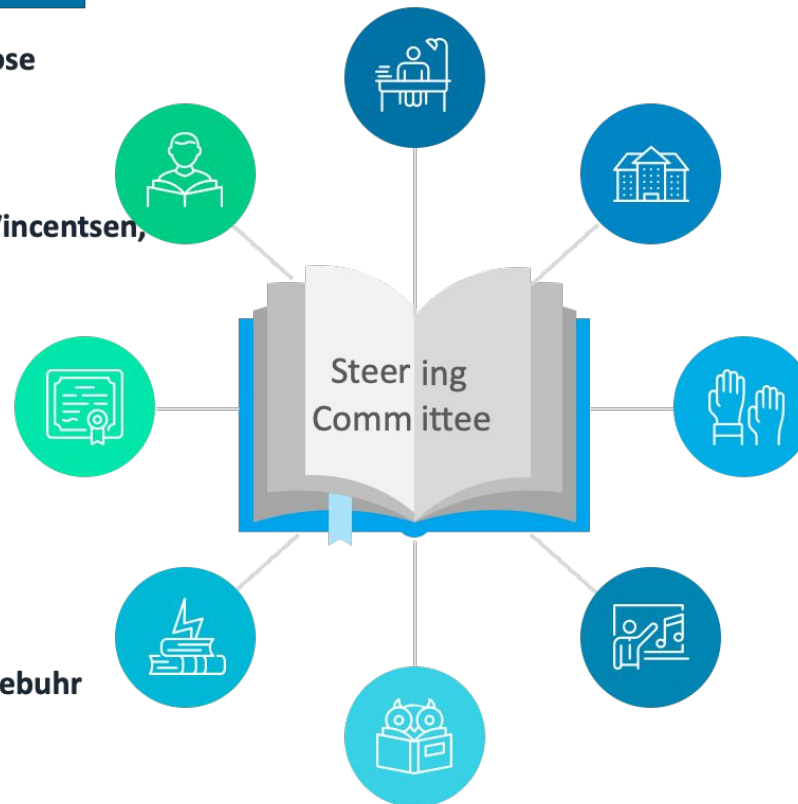
Administrators, Administrator for
Student Services, METCO staff,
Psychologists, Social Workers,
Faculty, Invited Guests

◆ Special Education – Mary Emmons

Coordinators, Special Educators,
Related Service Providers, Invited
Guests

◆ Health and Safety – Erich Ledebuhr

Administrator for Student
Services, Nurses, Faculty, Invited
Guests



◆ IT/Technology – Rob Ford

IT Staff, ITS Faculty, Invited Guests

◆ Budget/Finance – Buck Creel

Business Office Staff, SC Member,
Invited Guests

◆ Facilities/Operations & Logistics – Michael Haines

Business Administrator,
Technology Director, Food Services
Director, School staff, Invited
Guests

TIMELINE and Next Steps



May

Create Task Force



June

**Kick Off
Steering Committee
And
Working Groups**

Develop Proposals



July

**Develop and Vet Proposals
Vet Plans**



August

Finalize Plans



September

Implementation