



Overview of 2007 Class Size Policy Study

School Committee Meeting
December 4, 2014

Class Size Policy 2000 - 2007

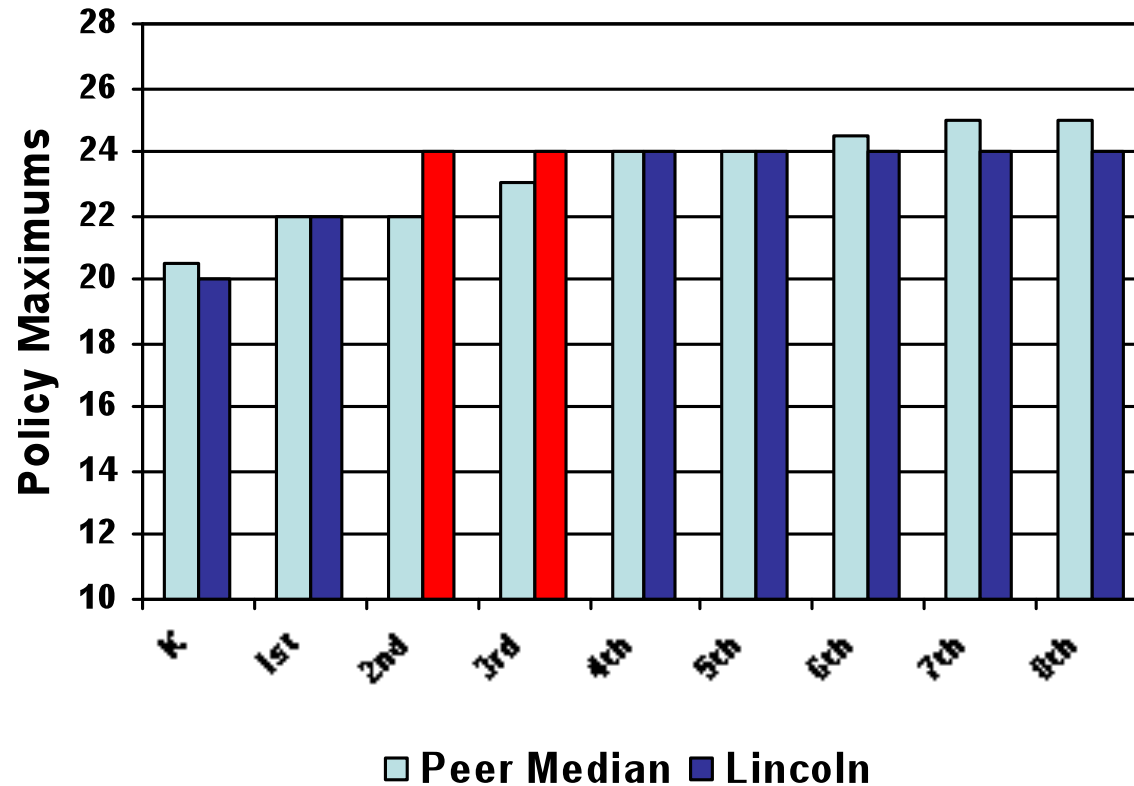
- Kindergarten: Target 18; Maximum 20
- Grade 1: Target 20; Maximum 22
- Grades 2 – 8: Target 22; Maximum 24
 - Concerns about class sizes in grades 2 and 3
 - No “hard” maximum: prepare a financial plan & consult with SC if enrollment projections *exceed by 4 the total target* number of any grade

Data Gathered in 2007

- Research on impact of class size
- Data on peer community policies
- Data on education program of peer communities
- Opinions of parents and faculty
- Assessment of financial impact of any policy proposals
- Study lasted 9 months

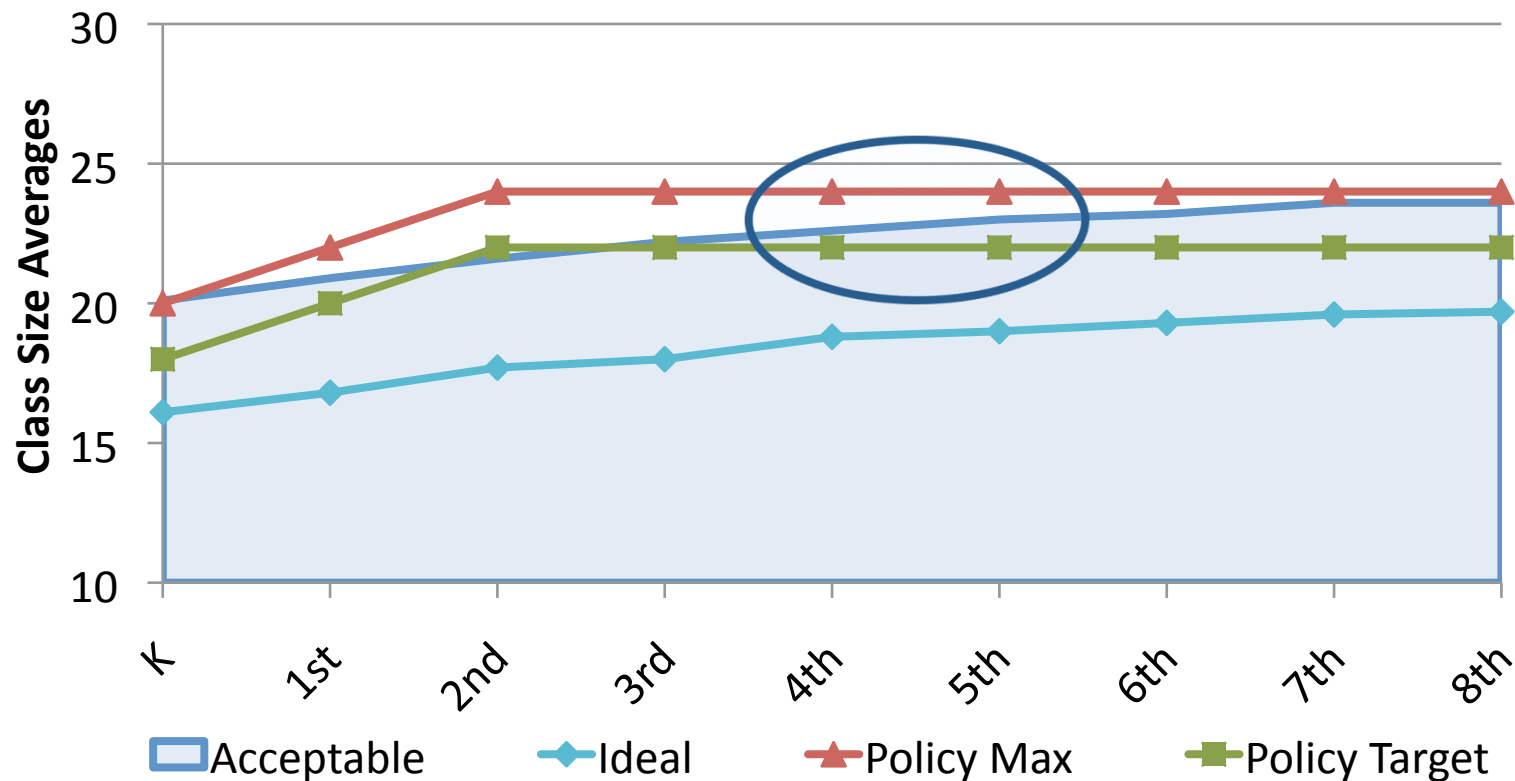
Peer Data 2007

Peer Policy Median vs. Lincoln School Policy



Parent/Guardian 2007 Survey

Ideal and Unacceptable vs. 2000 Lincoln Policy
(Base: Total District Assessment vs. Lincoln School Policy)



2007 Findings/Recommendation

- Committee agreed that smaller classes are advantageous for the early grades
- Committee agreed that the maximums in grades 2 and 3 should be lowered
- Committee agreed that policy should have “teeth” i.e. require action when class sizes exceed maximums
- Differing views about how much of a reduction should be recommended
 - Almost ½ of committee supported a maximum of 20 for grades K-3
 - Concern that this would be too limiting and expensive in a small district
- **Recommendation:**
 - Lower maximums in grades 2 & 3 – research supported low numbers in early grades
 - Add “hard” maximum w/ required addition of a section
 - Add requirement that classes not be allowed to exceed “preferred” more than 2 times in grades K-5 – no grade consistently large

Analyzing the Current Policy

Pros

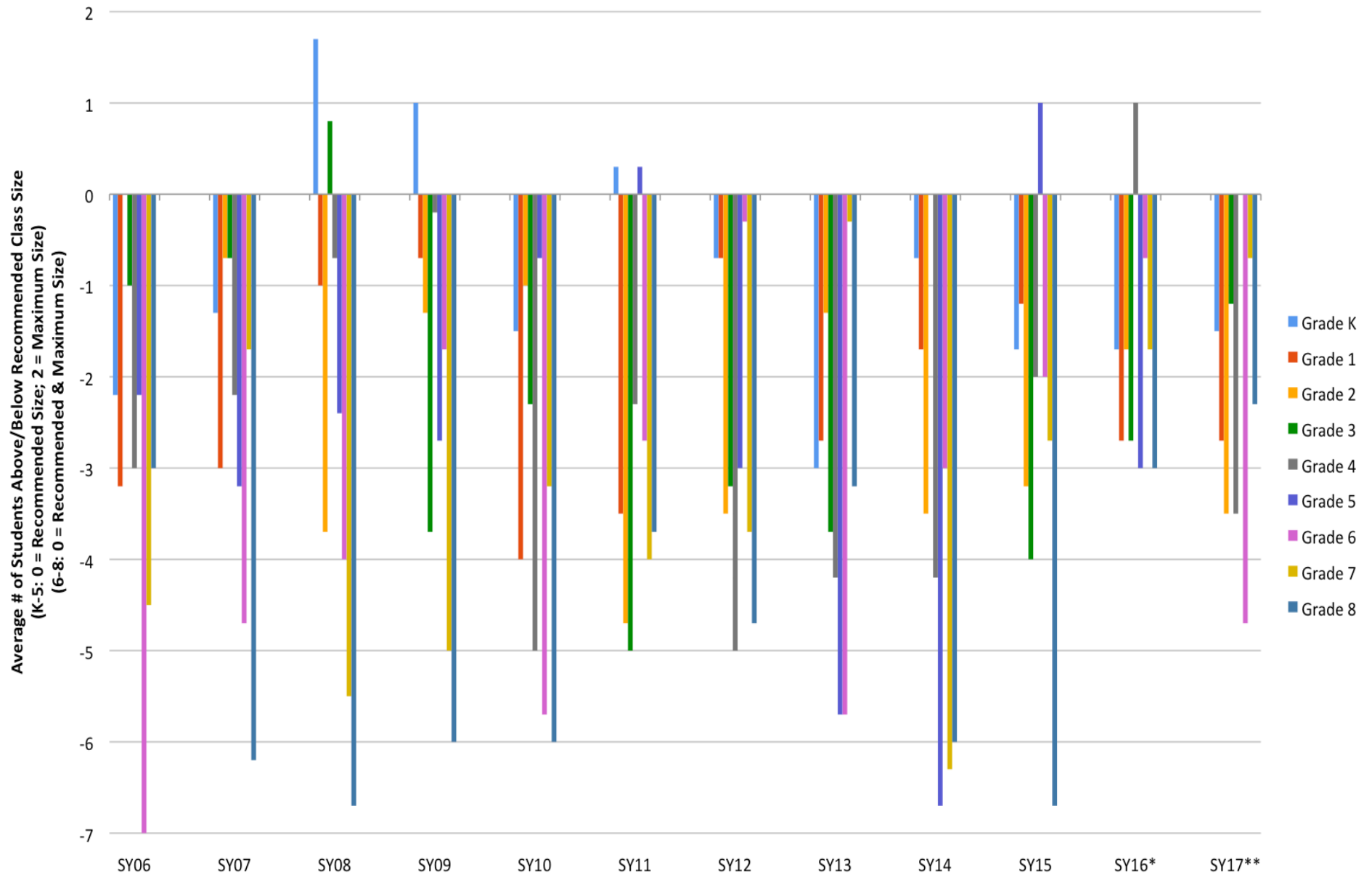
- Smaller classes for youngest students
- “Hard” maximum—SC is required to take action
- “Preferred” and “Max” numbers mean one grade isn’t always “the big class”
- In line w/peer districts
- Allows for flexibility in a small district
- Creates predictability for families and budget planning

Cons

- Max numbers a bit larger than “acceptable” range indicated in 2007 survey
- Collapsing a section means a noticeable increase in class size

Average Class Size by Grade Level

Number of Students Above or Below Recommended Class Size



* Projected.

** Projected. Assumes additional section in Grade 4 in SY17.

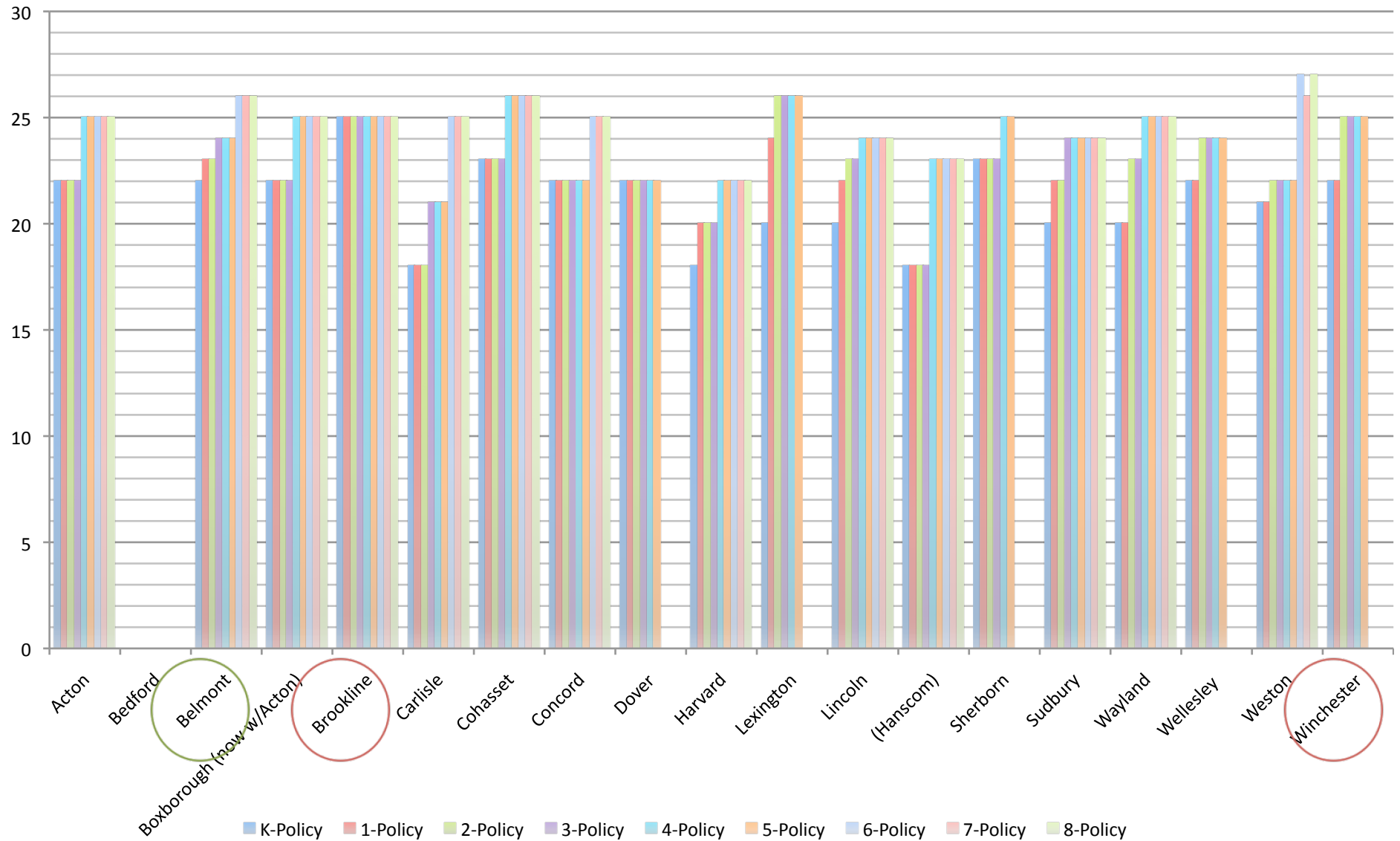
12/4/14

Section Changes

	K – Max 20	1 – Max 22	2/3 - Max 23	4/5 – Max 24	6-8 - Max 24
49	3/16.3	3	3	3	3
60	3/20	3	3	3	3
61	4/15.25	3/20.3	3	3	3
72	4/18	4	4	3/24	3
73	4/18.25	4	4	4	4
80	4/20	4	4	4	4
81	5/16.25	4/20.25	4	4	4
96	5/19.2	5	5	4/24	4
97	5/19.4	5	5	5	5
101	6/16.83	5/20.2	5	5	5

Current Peer Class Size Policies

10



12/4/14

Current Data in Peer Districts

- Our policy continues to be in line with other districts, and lower than many
- Other policies generally do not have hard maximums requiring the addition of a section*
- Overall our class sizes are smaller than peer districts
 - Averages range from 15 to 23.67
 - Individual sections in grades K-5 range from 15 to 29

*A couple of contracts require an aide over a certain number; Lexington's contract says, "If any class exceeds the maxima (K=20, 1=24, 2-5=26) by 20% or more, the class will be split."

Lincoln – Class Size Projection

As originally presented

12

Lincoln School		K-garten	Grade 1	Grade 2	Grade 3	Grade 4	Grade 5	Grade 6	Grade 7	Grade 8	Total
FY08 October 1 report	Sections	3	3	4	4	3	5	4	4	4	34
	Class Size	19.7	19.0	17.3	21.8	21.3	19.6	20.0	18.5	17.3	19.3
FY09 October 1 report	Sections	3	3	3	4	4	3	4	4	4	32
	Class Size	19.0	19.3	19.7	17.3	21.8	19.3	22.3	19.0	18.0	19.5
FY10 October 1 report	Sections	4	4	3	3	4	4	3.0	4	4	33
	Class Size	16.5	16.0	20.0	18.7	17.0	21.3	18.3	20.8	18.0	18.2
FY11 October 1 report	Sections	3	4	4	4	3	3	4	3	4	32
	Class Size	18.3	16.5	16.3	16.0	19.7	22.3	21.3	20.0	20.3	18.8
FY12 October 1 report	Sections	4	3	4	4	4	3	3	4	3	32
	Class Size	17.3	19.3	17.5	17.8	17.0	19.0	23.7	20.3	19.3	18.8
FY13 October 1 report	Sections	4	4	3	4	4	4	3	3	4	33
	Class Size	15.3	17.3	19.7	17.3	17.8	16.3	18.3	23.7	20.8	18.3
FY14 October 1 report	Sections	4	4	4	3	4	4	3	3	4	33
	Class Size	17.3	18.3	17.5	21.0	17.8	15.3	21.0	17.7	18.0	18.0
FY15 October 1 report	Sections	4	4	4	4	3	3	3	3	3	31
	Class Size	16.3	18.8	17.8	17.0	20.0	23.0	22.0	21.3	17.3	19.0
FY16 Projected	Sections	4	4	4	4	3	3	3	3	3	31
	Class Size	16.3	17.3	19.3	18.3	23.0	19.0	23.3	22.3	21.0	19.7
FY17 Projected	Sections	4	4	4	4	3	3	3	3	3	31
	Class Size	16.5	17.3	17.5	19.8	24.7	22.0	19.3	23.3	21.7	19.9
SC Policy on Class Size	Recommended	18	20	21	21	22	22	24	24	24	
	Maximum	20	22	23	23	24	24	24	24	24	



Above recommended class size

Lincoln – Class Size Projection

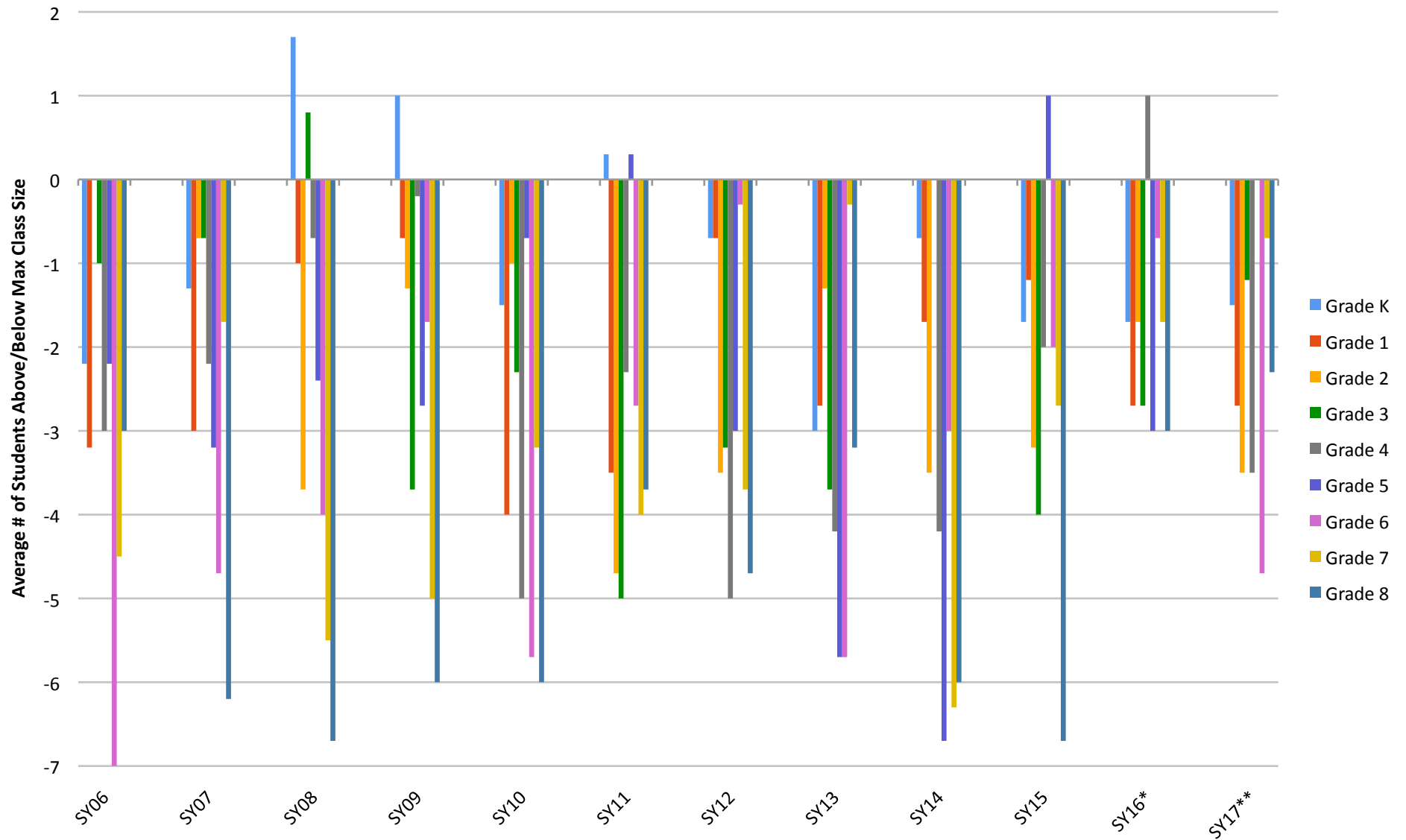
With Max Class Size = 21 for grades 1 -- 5

13

Lincoln School		K-garten	Grade 1	Grade 2	Grade 3	Grade 4	Grade 5	Grade 6	Grade 7	Grade 8	Total	Revised
FY08	Sections	3	3	4	4	3	5	4	4	4	34	36
October 1 report	Class Size	19.7	19.0	17.3	21.8	21.3	19.6	20.0	18.5	17.3	19.3	
FY09	Sections	3	3	3	4	4	3	4	4	4	32	33
October 1 report	Class Size	19.0	19.3	19.7	17.3	21.8	19.3	22.3	19.0	18.0	19.5	
FY10	Sections	4	4	3	3	4	4	3.0	4	4	33	34
October 1 report	Class Size	16.5	16.0	20.0	18.7	17.0	21.3	18.3	20.8	18.0	18.2	
FY11	Sections	3	4	4	4	3	3	4	3	4	32	33
October 1 report	Class Size	18.3	16.5	16.3	16.0	19.7	22.3	21.3	20.0	20.3	18.8	
FY12	Sections	4	3	4	4	4	3	3	4	3	32	
October 1 report	Class Size	17.3	19.3	17.5	17.8	17.0	19.0	23.7	20.3	19.3	18.8	
FY13	Sections	4	4	3	4	4	4	3	3	4	33	
October 1 report	Class Size	15.3	17.3	19.7	17.3	17.8	16.3	18.3	23.7	20.8	18.3	
FY14	Sections	4	4	4	3	4	4	3	3	4	33	
October 1 report	Class Size	17.3	18.3	17.5	21.0	17.8	15.3	21.0	17.7	18.0	18.0	
FY15	Sections	4	4	4	4	3	3	3	3	3	31	32
October 1 report	Class Size	16.3	18.8	17.8	17.0	20.0	23.0	22.0	21.3	17.3	19.0	
FY16 Projected	Sections	4	4	4	4	3	3	3	3	3	31	32
	Class Size	16.3	17.3	19.3	18.3	23.0	19.0	23.3	22.3	21.0	19.7	
FY17 Projected	Sections	4	4	4	4	3	3	3	3	3	31	33
	Class Size	16.5	17.3	17.5	19.8	24.7	22.0	19.3	23.3	21.7	19.9	
SC Policy on Class Size	Recommended	18	20	21	21	22	22	24	24	24		
	Maximum	20	22/21	23/21	23/21	24/21	24/21	24	24	24		

Historical Analysis of Average Class Size by Grade Level: **Scenario 1 – Max 21 Grades 1 - 5** Number of Students Above or Below Maximum Class Size

14



* Projected.

** Projected. Assumes additional section in Grade 4 in SY17.

12/4/14

Lincoln – Class Size Projection

With Max Class Size = 19 for grades K -- 5

15

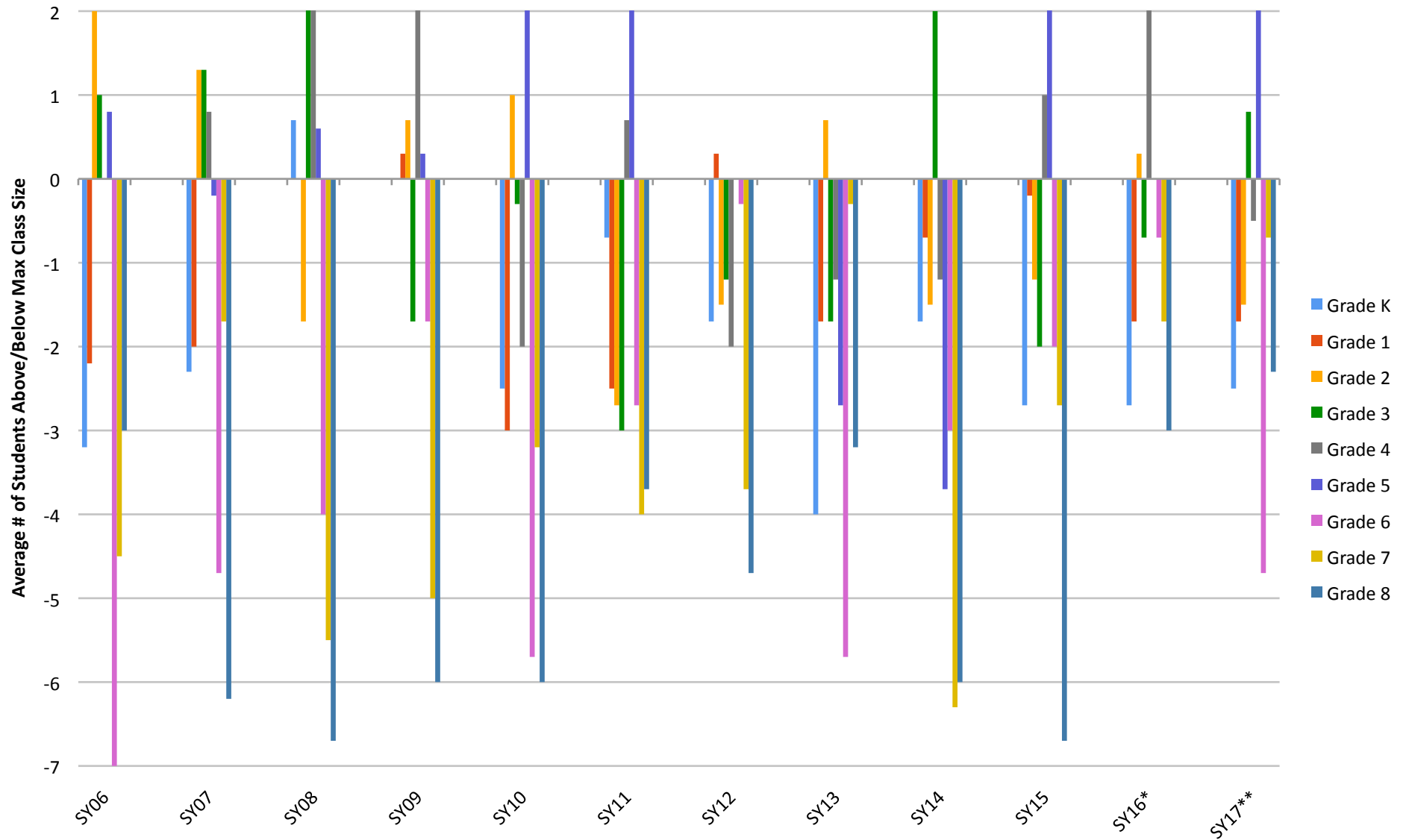
Lincoln School		K-garten	Grade 1	Grade 2	Grade 3	Grade 4	Grade 5	Grade 6	Grade 7	Grade 8	Total	Revised
FY08	Sections	3	3	4	4	3	5	4	4	4	34	38
October 1 report	Class Size	19.7	19.0	17.3	21.8	21.3	19.6	20.0	18.5	17.3	19.3	
FY09	Sections	3	3	3	4	4	3	4	4	4	32	36
October 1 report	Class Size	19.0	19.3	19.7	17.3	21.8	19.3	22.3	19.0	18.0	19.5	
FY10	Sections	4	4	3	3	4	4	3.0	4	4	33	35
October 1 report	Class Size	16.5	16.0	20.0	18.7	17.0	21.3	18.3	20.8	18.0	18.2	
FY11	Sections	3	4	4	4	3	3	4	3	4	32	34
October 1 report	Class Size	18.3	16.5	16.3	16.0	19.7	22.3	21.3	20.0	20.3	18.8	
FY12	Sections	4	3	4	4	4	3	3	4	3	32	33
October 1 report	Class Size	17.3	19.3	17.5	17.8	17.0	19.0	23.7	20.3	19.3	18.8	
FY13	Sections	4	4	3	4	4	4	3	3	4	33	34
October 1 report	Class Size	15.3	17.3	19.7	17.3	17.8	16.3	18.3	23.7	20.8	18.3	
FY14	Sections	4	4	4	3	4	4	3	3	4	33	34
October 1 report	Class Size	17.3	18.3	17.5	21.0	17.8	15.3	21.0	17.7	18.0	18.0	
FY15	Sections	4	4	4	4	3	3	3	3	3	31	33
October 1 report	Class Size	16.3	18.8	17.8	17.0	20.0	23.0	22.0	21.3	17.3	19.0	
FY16 Projected	Sections	4	4	4	4	3	3	3	3	3	31	33
	Class Size	16.3	17.3	19.3	18.3	23.0	19.0	23.3	22.3	21.0	19.7	
FY17 Projected	Sections	4	4	4	4	3	3	3	3	3	31	34
	Class Size	16.5	17.3	17.5	19.8	24.7	22.0	19.3	23.3	21.7	19.9	
SC Policy on Class Size	Recommended	18	20	21	21	22	22	24	24	24		
	Maximum	20/19	22/19	23/19	23/19	24/19	24/19	24	24	24		

Historical Analysis of Average Class Size by Grade Level:

Scenario 2 – Max 19 K-5

Number of Students Above or Below Max Class Size

16



* Projected.

** Projected. Assumes additional section in Grade 4 in SY17.

12/4/14