

Lincoln School Committee

January 5, 2021

COVID Case Update and Discussion

Agenda

- Setting the Stage
 - Purpose - Considering the unknown but anticipated positive cases
 - Should we consider a period of remote learning?
 - Current District COVID Dashboard Information
 - Reviewing our Year to Date Positive Case Data
- Q&A/Public Comment
- Discuss the Parameters Associated with In-Person vs Remote Learning Models
 - What is the criteria for changing learning models at the school of district level?
- Q&A/Public Comment

LPS COVID District Dashboard

Metrics Last Updated:	1/4/2021				
Community Metrics:					
Indicator:	Source	Current	Indicator Ranges For In-Person Learning	Indicator Color Level	Change From Last Week/NOTES
MA Re-Opening Phase	Mass.gov	Phase 3 Step 1	> Phase 1	In Person	Changed 12/9 back to Phase 3, Step 1.
Hanscom Re-Opening Phase	Defense Dept.	Phase 2C		In Person	Moved from 2B 8/31
MA 7 Day Weighted Average of PositiveMolecular Test Rate	Mass.gov <i>Daily Response Report</i>	8.42%	< 5%	Hybrid	As of 1/3/21 Higher (% last week)
Lincoln New Positive Case Numbers (Rolling 14 days)	MA DPH <i>Wkly PH Report</i> Lincoln Town Nurse	18.1 19 Active Cases Context: <i>Demographics:</i> 1 0-10yrs; 2 11-20; 3 21-30yrs; 3 31-40yrs; 3 51-60yrs; 1 61-70yrs; 6 70+yrs	Under 10	Hybrid	As of 12/31/20 Higher in relative change in case counts; Higher percent positivity (last week)
Hanscom AFB New Positive Cases (Rolling 14 days)	HAFB Base Commander	7 <i>Demographics:</i> 4 parents, 3 base residents			As of 1/4/21
Sudbury Average Incidence Rate per 100,000 (last 14 days)	MA DPH <i>Wkly PH Report</i>	24.1%	<10 In-Person >10 or > 5% pos. rate Hybrid >10 and >5% pos. rate Remote	Hybrid	Higher relative change in case counts; Higher in change percent positivity (19.3% last week)
Bedford Average Incidence Rate per 100,000 (last 14 days)	MA DPH <i>Wkly PH Report</i>	25.2%	<10 In-Person >10 or > 5% pos. rate Hybrid >10 and >5% pos. rate Remote	Hybrid	Lower relative change in case counts; No Change percent positivity (% last week)

School-Level Status Update

Indicator:	Source	Current Positive Cases	Details/ Clarifications	Cohorts Impacted	Change From Last Week
Total LPS District New Positive Cases (Rolling 14 days)	Lincoln Health Dept.	# Students: 3 # Staff: 4	Includes 1 Central Office Staff returning 1/7/21		
Lincoln PK-4 (Rolling 14 days)	LHD/ Principal	# Students: 2 # Staff: 3	12/21 - 1 Student 12/22 - 1 Faculty 12/23 - 1 Student 12/27 - 1 Faculty 12/30 - 1 Staff	1	
Lincoln 5-8 (Rolling 14 days)	LHD/ Principal	# Students: 0 # Staff: 0			
HPS (Rolling 14 days)	LHD/ Principal	# Students: 1 # Staff: 0	1/4 - 1 Student	0	Student had been in quarantine due to parent testing positive.
HMS (Rolling 14 days)	LHD/ Principal	# Students: 0 # Staff: 0			
Preschool	LHD/Director	# Students: 0 # Staff: 0			

Positive Cases to Date										
	September		October		November		December			
School	Students		Staff	Students	Staff	Students		Staff	Students	Staff
Preschool	0	0		0	0	0	0		1	0
Lincoln K-4	0	0		0	0	0	1		8	5
Hanscom Primary School	0	0		0	0	1	2		1	0
Lincoln 5-8	0	0		1	0	0	0		0	0
Hanscom Middle School	0	0		2	0	0	1		0	1

		Known Close Contact			Duplicate Count	
School	Total Positive Cases	Out of School	In School	Unknown	Asymptomatic	Student Families
Preschool	1	1				1
Lincoln K-4	14	6	2*	6	5	7
Hanscom Primary School	3	3			1	2
Lincoln 5-8	1			1		1
Hanscom Middle School	4	4			1	1

*2nd Individual in Cohort

Review and Assessment of Each Positive Case

1. Information is gathered regarding symptom onset, testing date, testing results, known close contacts.
2. Team Consultation: Principal, Superintendent, School Nurse, Mary Emmons, Town Nurse, Tricia McGean (sometimes cross campus team)
3. Identify close contacts & determine last exposure to positive individual (close contacts are traced back to 48 hours prior to symptom onset or testing date)
4. Determine quarantine periods for positive individual and the close contacts
5. Communicate with positive individual and family, close contacts, school faculty and staff, district community
6. Nurse tracks test results for close contacts

Q&A/Public Comment Related to Information Presented

When reviewing existing positive case data, what would lead to a grade level, school, or the district going remote?

- We are unable to staff a school or portion of a school due to staff being out with symptoms, awaiting test results, quarantine and isolation
- Key staff are absent and coverage is unavailable
- Number of Families Requesting Remote Placements
- Number of Close Contacts Going Remote
- Number of Students and Staff Absent with Symptoms
- *Evidence of clusters of individuals receiving positive tests in the same time frame*
- *Evidence of viral spread from one individual to others within the school*

Are there reasons to be nervous?

Cases overview

Middlesex County

Total cases
78,663
+842

Recovered
-

Deaths
2,772
+13

Massachusetts

Total cases
388K
+0

Recovered
-

Deaths
12,669
+59

United States

Total cases
20.9M
+196K

Recovered
-

Deaths
354K
+2,047

Worldwide

Total cases
85.8M

Recovered
48.2M

Deaths
1.86M



CNN

UK Prime Minister imposes harsh lockdown as new Covid-19 variant spreads

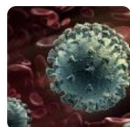
UK Prime Minister Boris Johnson reimposed a lockdown in England on Monday as a more transmissible variant of Covid-19 fuels a surge in ...
3 hours ago



The Wall Street Journal

Highly Contagious Covid-19 Strain Has Been Found in New York State, Gov. Cuomo Says

The highly contagious strain of Covid-19 recently discovered in the UK Kingdom has reached New York, Gov. Andrew Cuomo said Monday.
15 hours ago



BBC News

New coronavirus variant: What do we know?

How has a new coronavirus variant become the most common form of the virus in parts of England?
2 weeks ago



Associated Press

US deaths in 2020 top 3 million, by far most ever counted
NEW YORK (AP) — This is the deadliest year in U.S. history, with deaths expected to top 3 million for the first time — due mainly to the ...
2 weeks ago

The virus spreads in schools — but schools are rarely superspreaders

Early data from K-12 schools do not confirm fears that bringing students together in classrooms inevitably creates COVID-19 petri dishes — although the absence of a standardized national database of school cases makes it impossible to know for sure. University researchers have partly filled the void with a plethora of data analyses from selected schools and grades.

One of the largest studies, led by Brown University economist Emily Oster, PhD, analyzed in-school infection data from 47 states over the last two weeks of September. Among more than 200,000 students and 63,000 staff who had returned to school, Oster reported an infection rate of 0.13% among students and 0.24% among staff.



The Jerusalem Post

Coronavirus: Gov't expected to pass two-week total lockdown

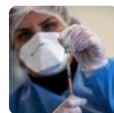
The government is meeting Tuesday afternoon to determine next steps for stopping the colossal spread of the coronavirus across Israel.
15 mins ago



The Guardian

Covid vaccinations: slow start around world brings dose of reality

The global introduction of newly approved coronavirus vaccines has been marked by delays, shortages and bureaucratic errors as it has ...
5 hours ago



Albany Times Union

Saratoga Springs jeweler tests positive for highly contagious coronavirus variant

New COVID-19 variant that is fueling the outbreak in the United Kingdom has been found in...
12 hours ago



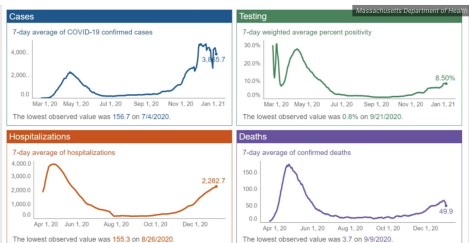
The New York Times

Virus Overwhelms U.S. and Europe Even as Vaccines Roll Out

The head of U.S. vaccine distribution apologizes as at least 14 states are getting fewer doses than expected in the near term. Britain heads into ...
1 week ago



Boston extends COVID-19 closures, restrictions that go beyond state rules



For details on the definitions of each indicator please see the corresponding tab for that indicator. All data included in this dashboard are preliminary and subject to change. Data Sources: COVID-19 Data provided by the Bureau of Infectious Disease and Laboratory Sciences and the Registry of Vital Records and Statistics. Created by the Massachusetts Department of Public Health, Bureau of Infectious Disease and Laboratory Sciences, Chief of Integrated Surveillance and Informatics Services.

The trends tab of Massachusetts' coronavirus dashboard as it appeared on its debut Monday, Jan. 4, 2020.

When considering a potential surge in cases, unknown anticipated cases, what should be considered?

1. Should we consider a period of remote learning?
 - a. Does the local/state level data support this action?
 - b. To what extent can we take insight from actions taken in other contexts? Eg other states, countries locking down, rising numbers
2. What would the school/district/local-level data criteria be for changing learning models?
3. If the district were fully remote, what would the criteria be for returning to in-person learning?
4. Are there specific milestones or checkpoints that we should set in the future?
5. Are there any other mitigating protocols that we could consider?

General Q&A/Public Comment

Next Steps

Summary of LK-4 December Positive Cases

- 8 Students
- 5 Employees

Of these cases, 12 out of 13 exposure was prior to the Winter Recess (based on symptom onset and testing date)

Prior to December there was only one other positive case, an adult with close contact outside of school

We currently have 3 students identified as close contacts to a household member that are waiting for test results.

Close contacts and positive individuals are all in quarantine.

Students Case by Case (in order of notification)

Student 1	close contact within the home
Student 2	close contact within the home (same household as student 3
Student 3	close contact within the home, asymptomatic (same cohort as student 6)
Student 4	close contact within the home, asymptomatic
Student 5	close contact within the home, asymptomatic
Student 6	unknown contact (same cohort as student 3)
Student 7	unknown contact, asymptomatic tested prior to travel
Student 8	unknown contact (same cohort as staff 3)

Staff Case by Case (in order of notification)

Staff 1 known close contact outside of school (same close contact as staff 2)

Staff 2 known close contact outside of school (same close contact as staff 1)

Staff 3 unknown contact (same cohort as student 8)

Staff 4 unknown contact

Staff 5 unknown contact, asymptomatic, timing of test suggests out of school contact

Cases that raise questions

Student 3 close contact within the home, asymptomatic (same cohort as student 6)

Student 6 unknown contact (same cohort as student 3)

Student 8 unknown contact (same cohort as staff 3)

Staff 3 unknown contact (same cohort as student 8)