

HOW TO:

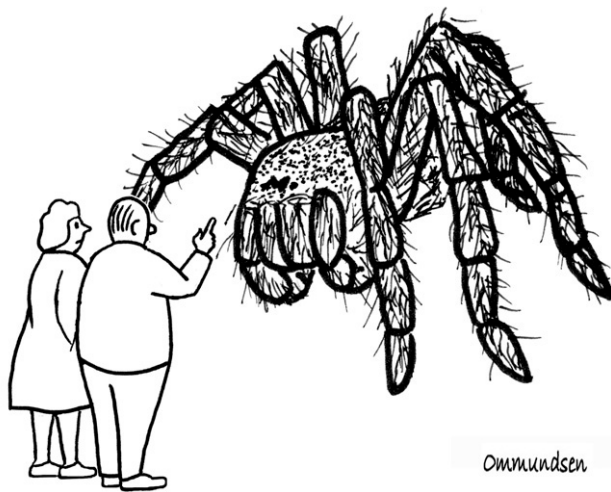
Write a Hypothesis



- A hypothesis **IS NOT** an educated guess. It is an **uncertain** explanation for an observation, phenomenon, or scientific problem that can be tested by further investigation.
- Your hypothesis should be something that you can actually test, what's called a **testable** hypothesis. In other words, you need to be able to measure both "what you do" and "what will happen."

Use an **If... Then** ...statement.

- **If** the independent variable changes, **then** the dependent variable will change.
- **If** the amount of soap increases, **then** the amount of water will increase.
- **If** I open the faucet [faucet opening size is the independent variable], **then** it will increase the flow of water [flow of water is the dependent variable].
- **If** a plant receives fertilizer [having fertilizer is the independent variable], **then** it will grow to be bigger than a plant that does not receive fertilizer [plant size is the dependent variable]."
- **If** I put fenders on a bicycle [having fenders is the independent variable], **then** they will keep the rider dry when riding through puddles [the dependent variable is how much water splashes on the rider]."



Ommundsen

**"I've narrowed it to two hypotheses:
it grew or we shrunk."**